



Equipped with AEM® Dryflow™ Filter  
No Oil Required!

## INSTALLATION INSTRUCTIONS

**PART NUMBER:21-682C** (Gunmetal Gray)

**21-682P** (Vacuum Metalized Chrome)

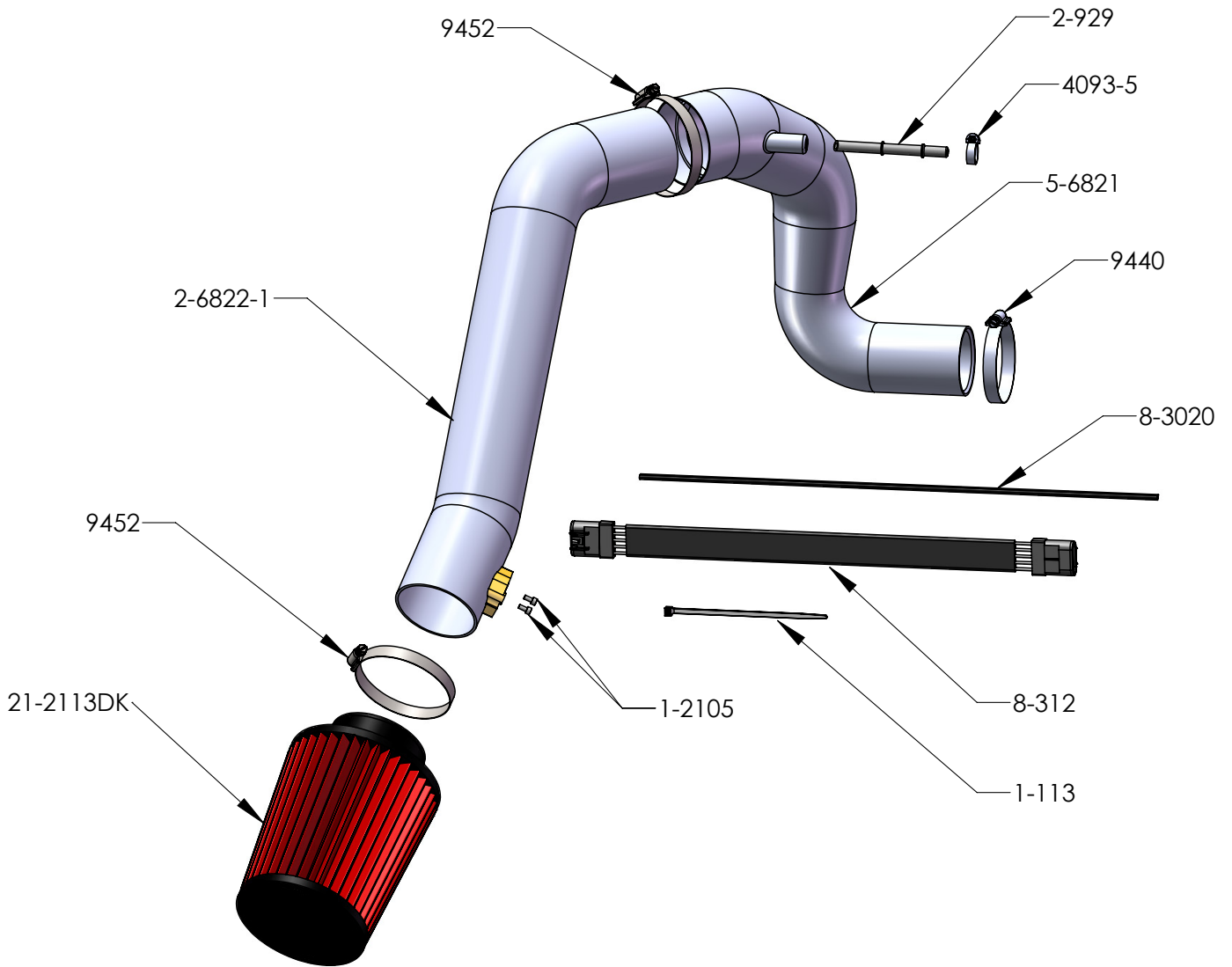
---

2008-2010 CHEVROLET COBALT L4-2.0L Turbo C.A.R.B. E.O. # D-670-21

**\* NOTE: Legal in California only for racing vehicles which may never be used upon a highway**

## PARTS LIST

Description	Qty.	Part Number
Air Filter Assy. 3.25 x 7" Dry Ele.	1	21-2113DK
Inlet Pipe	1	2-6822-1C/AP
Hose, Adapter	1	5-6821
Rubber Edge Trim 20"	1	8-3020
Nipple	1	2-929
Cable; MAF Extension	1	8-312
Zip Tie, 6 Long	1	1-113
Bolt, Socket M4-.7 x 8mm	2	1-2105
1/2' Bndhose Clamp, 2.15-3.00"	1	9440
1/2" Bndhose Clamp, 2.90"-3.75"	2	9452
Hose Clamp, 3/4"	1	4093-5



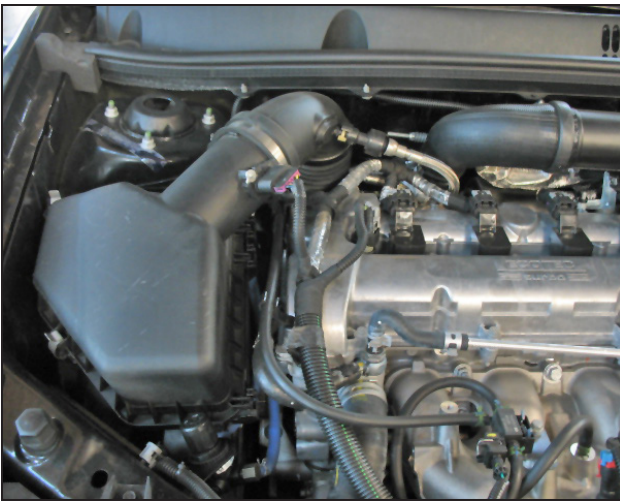
Read and understand these instructions **BEFORE** attempting to install this product. Failure to follow installation instructions and not using the provided hardware may damage the intake tube, throttle body and engine.

The AEM® intake system is a performance product that can be used safely during mild weather conditions. During harsh and inclement weather conditions, you must return your vehicle to stock OEM air box and intake tract configuration. Failure to follow these instructions will void your warranty.

## 1. Preparing Vehicle

- a. Make sure vehicle is parked on level surface.
- b. Set parking brake.
- c. If engine has run in the past two hours, let it cool down.
- d. Disconnect negative battery terminal.
- e. Do not discard stock components after removal of the factory system.

## 2. Removal of stock system



a. Stock air box system installed.



b. Remove the two 10mm nuts on the air box panel.

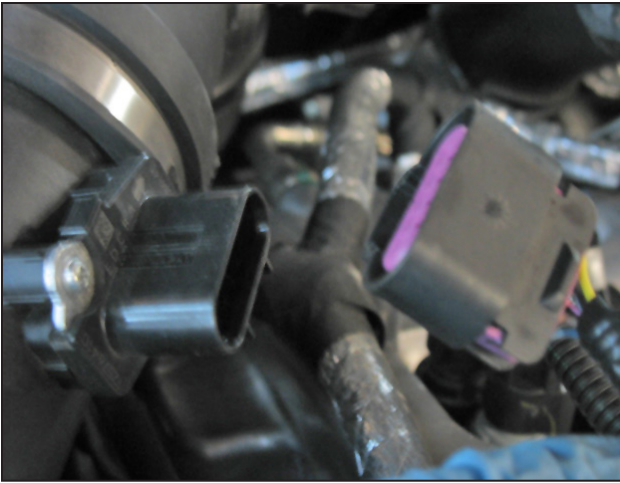


c. Disconnect the PCV line from the inlet tube by pressing the clip and pushing back.



d. Remove the locking clip on the MAF sensor harness by pressing the clip with a small flathead screwdriver.

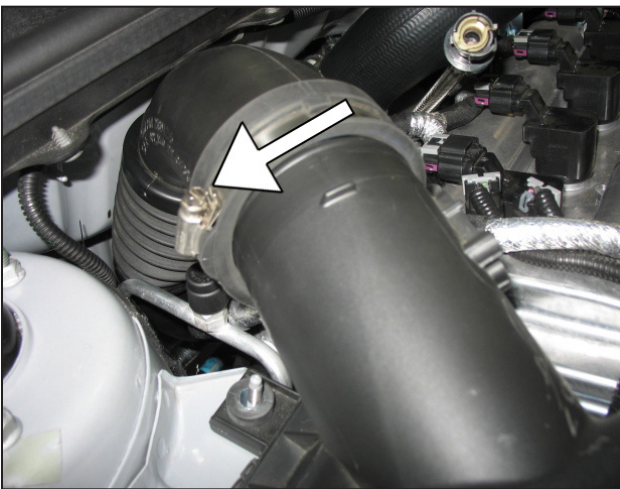




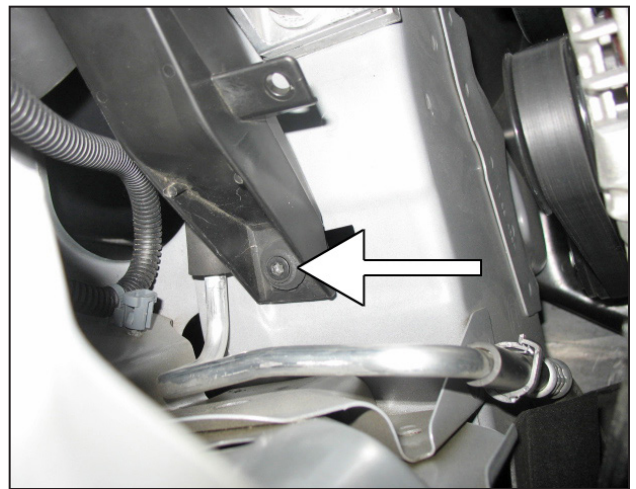
e. Unplug the MAF sensor connector.



f. Remove the MAF sensor from the inlet tube with a philips screwdriver.



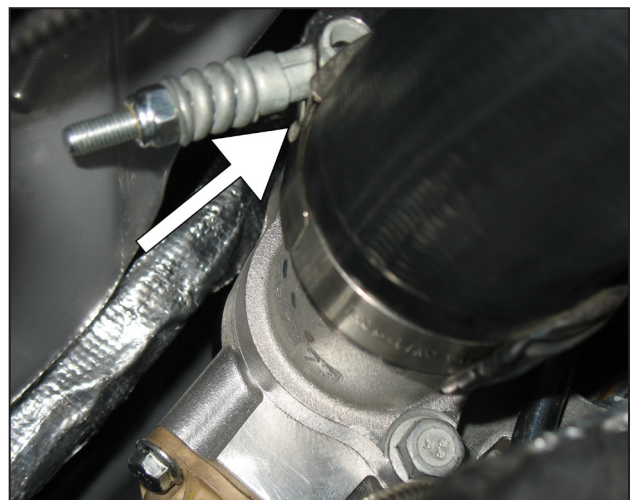
g. Using an 8mm nut driver, loosen the hose clamp as shown.



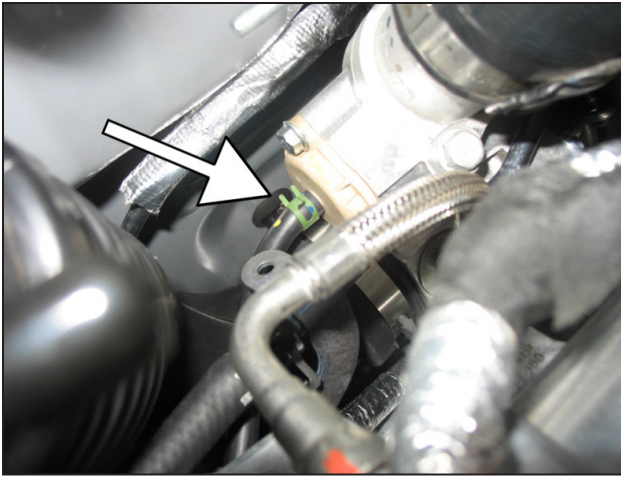
h. Remove the lower bolt holding the air box panel with a Torx T30 bit.



i. Remove the air box panel from the engine bay.



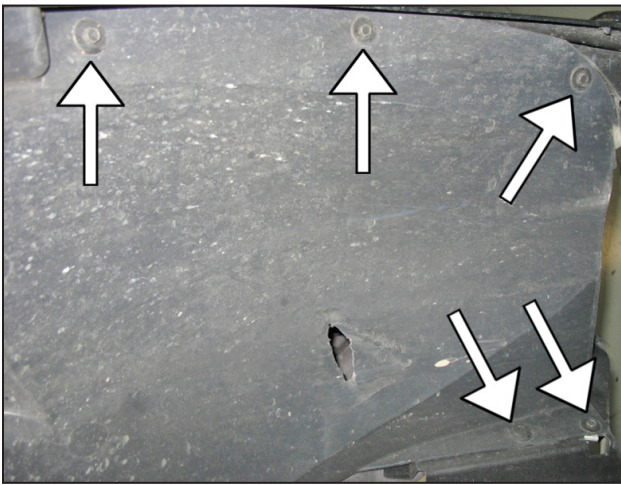
j. Loosen the t-bolt clamp in the direction as indicated in the photo.



k. Using an 8mm nut driver and universal joint, remove the hose clamp securing the compressor inlet tube, remove from the compressor.



l. Remove the passenger side front wheel with a 19mm socket.



m. Raise the front of the vehicle with a jack. Refer to your owner's manual for proper jack and jack stand placement to properly support vehicle. Support your vehicle using properly rated jack stands before wheel removal or while working under the vehicle. **NEVER WORK UNDER A VEHICLE WITHOUT USING JACK STANDS.** Remove the 7mm bolts and push clips on the right wheel well side.

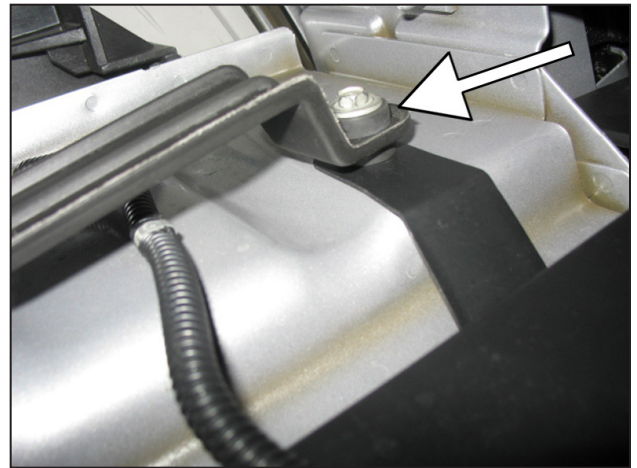




n. Remove the additional 7mm bolts and push clips on the corresponding bottom section.



o. Locate the lower air induction pipe and remove the retaining clip on the top section with a flathead screwdriver.



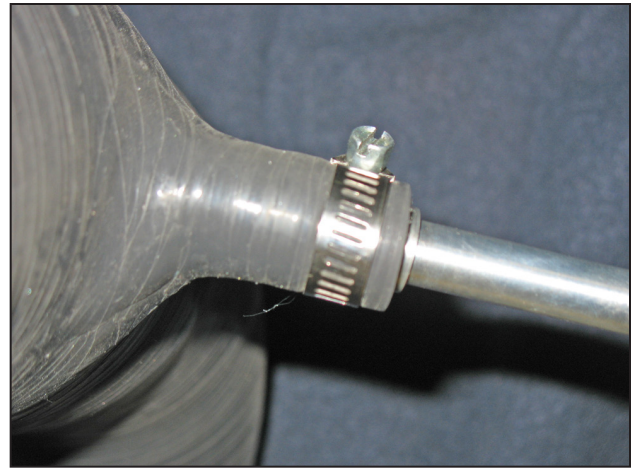
p. Remove the remaining lower 10mm bolt near the bottom of the air induction pipe.

**3. Installation of AEM® intake system.**

a. When installing the intake system, do not completely tighten the hose clamps or mounting hardware until instructed to do so.

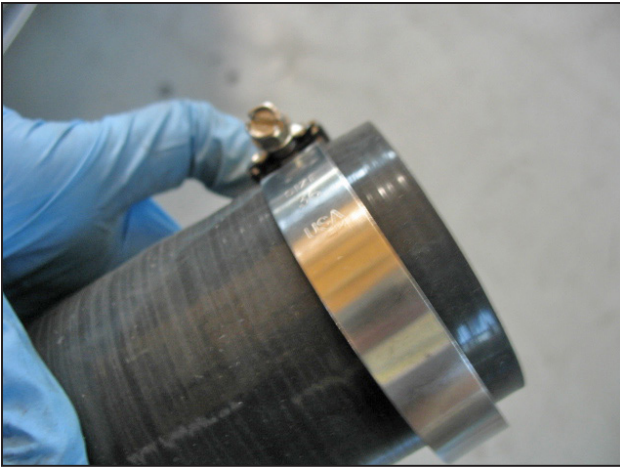


b. Insert the nipple breather (2-929) into the silicone adapter, with the orientation as indicated in the photo.



c. Slide a hose clamp (4093-5) over the indicated area as shown.





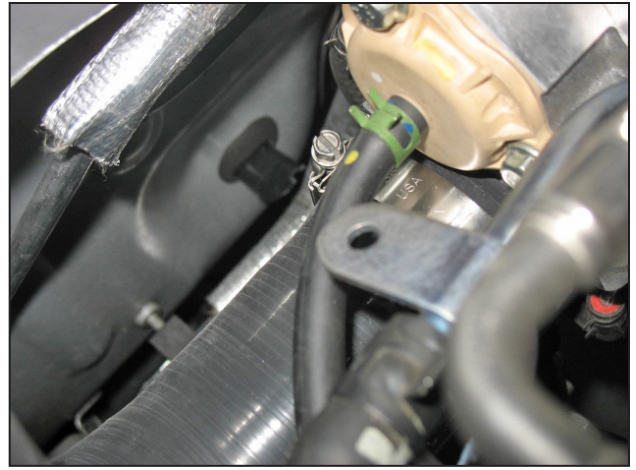
d. Place a #40 hose clamp over the smaller section of the silicone adapter (5-6821) as indicated.



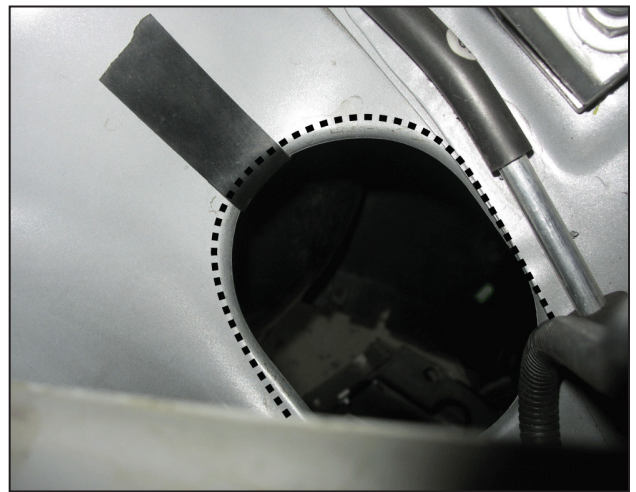
f. Place the larger #52 hose clamp over the other side of the silicone coupler.



h. Slide the lower intake pipe (2-6822-1) over the opening in engine bay as shown.



e. Install the smaller section of the coupler onto the inlet of the compressor.

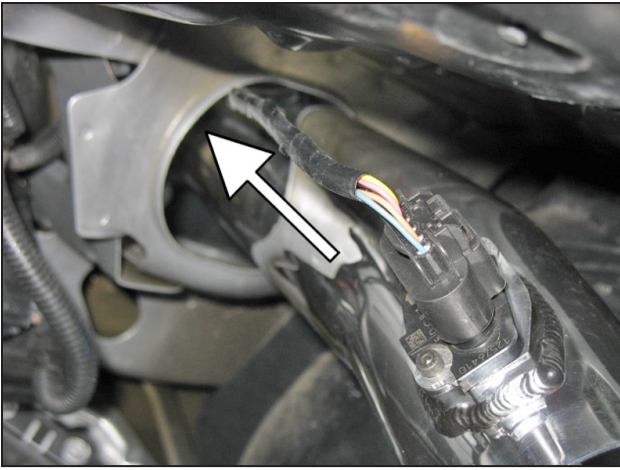


g. Install the rubber edge trim (8-3020) on the inside area of fender well hole as depicted.



i. Rotate the intake pipe as shown and install the MAF sensor with the provided M4-.7 X 8mm socket bolts (1-2105).

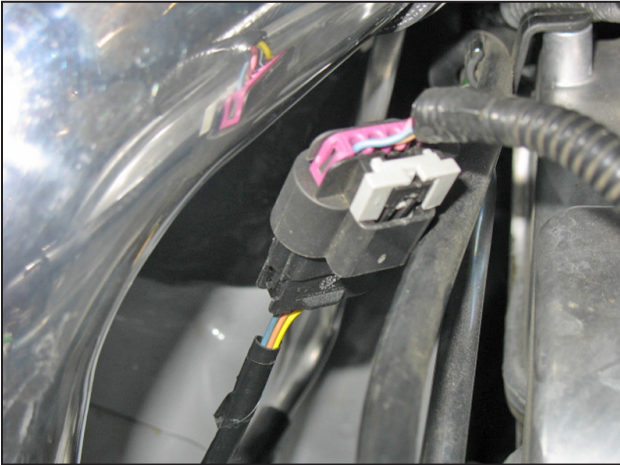




j. Install the extension harness (8-312) onto the MAF sensor, feeding the other end through the upper section of the opening.



k. Insert the intake pipe into the previously installed silicone adapter and place the bracket on the factory stud. Secure with the factory 10mm nut.



l. Plug the MAF sensor extension harness into the connector on the harness side. Install and secure the previously removed locking pin.



m. Connect the PCV connector to the other end of the breather nipple.

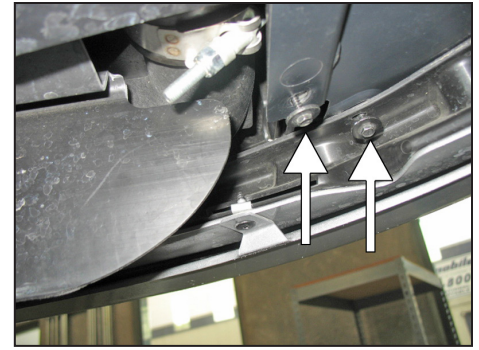
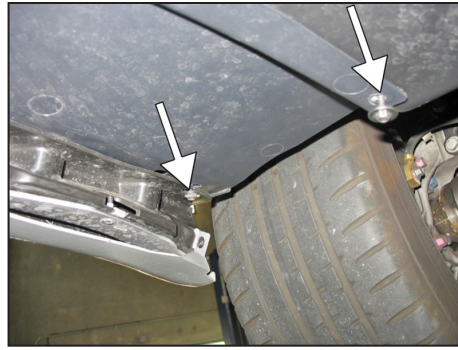
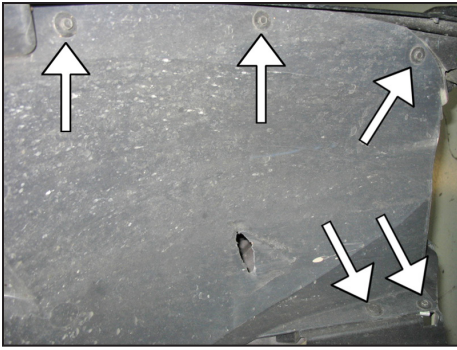


n. Install the air filter element (21-2113DK) onto the end of the intake pipe and secure with #52 hose clamp.



o. Secure the MAF extension harness in place with a zip tie as shown.





p. Reinstall the side and bottom bolts and clips removed in steps 2m and 2n.



Stock air box system installed



AEM® intake system installed

#### 4. Reassemble Vehicle

- a. **Wheel:** Install the driver side wheel using the factory torque specification (see owner's manual).
- b. Position the inlet pipes for the best fitment. Be sure that the pipes or any other components do not contact any part of the vehicle. Tighten all bolts, and hose clamps.
- c. Check for proper hood clearance. Re-adjust pipes if necessary and re-tighten them.
- d. Inspect the engine bay for any loose tools and check that all fasteners that were moved or removed are properly tightened.
- e. Reconnect negative battery terminal and start engine. Let the vehicle idle for 3 minutes. Perform a final inspection before driving the vehicle.

#### 5. CARB Sticker Placement

- a. The C.A.R.B. exemption sticker, (attached), must be visible under the hood so that an emissions inspector can see it when the vehicle is required to be tested for emissions. California requires testing every two years, other states may vary.

#### 6. Service and Maintenance

- a. AEM Induction Systems requires cleaning the intake system's air filter element every 100,000 miles. When used in dusty or off-road environments, our filters will require cleaning more often. We recommend that you visually inspect your filter once every 25,000 miles to determine if the screen is still visible. When the screen is no longer visible some place on the filter element, it is time to clean it. To clean, purchase our Synthetic air filter cleaner, part number 99-0624 and follow the easy instructions.
- b. Use window cleaner to clean your powder coated AEM® intake tube.

**NOTE: DO NOT USE aluminum polish on powder coated AEM® intake tubes.**

For technical inquiries  
e-mail us at  
sales@aemintakes.com  
or  
call us at  
800.992.3000

### **AEM Air Intake System Warranty Policy**

AEM® warrants that its intake systems will last for the life of your vehicle. AEM will not honor this warranty due to mechanical damage (i.e. improper installation or fitment), damage from misuse, accidents or flying debris. AEM will not warrant its powder coating if the finish has been cleaned with a hydrocarbon-based solvent. The powder coating should only be cleaned with a mild soap and water solution. Proof of purchase of both the vehicle and AEM intake system is required for redemption of a warranty claim.

This warranty is limited to the repair or replacement of the AEM part. In no event shall this warranty exceed the original purchase price of the AEM part nor shall AEM be responsible for special, incidental or consequential damages or cost incurred due to the failure of this product. Warranty claims to AEM must be transportation prepaid and accompanied with dated proof of purchase. This warranty applies only to the original purchaser of product and is nontransferable. Improper use or installation, use for racing, accident, abuse, unauthorized repairs or alterations voids this warranty. AEM disclaims any liability for consequential damages due to breach of any written or implied warranty on all products manufactured by AEM. Warranty returns will only be accepted by AEM when accompanied by a valid Return Merchandise Authorization (RMA) number. Credit for defective products will be issued pending inspection. Product must be received by AEM within 30 days of the date RMA is issued.

If you have a warranty issue, please call (800) 992-3000 and our customer service department will assist you. A proof of purchase is required for all AEM warranty claims.