



Equipped with AEM® Dryflow™ Filter  
No Oil Required!

# INSTALLATION INSTRUCTIONS

## PART NUMBER

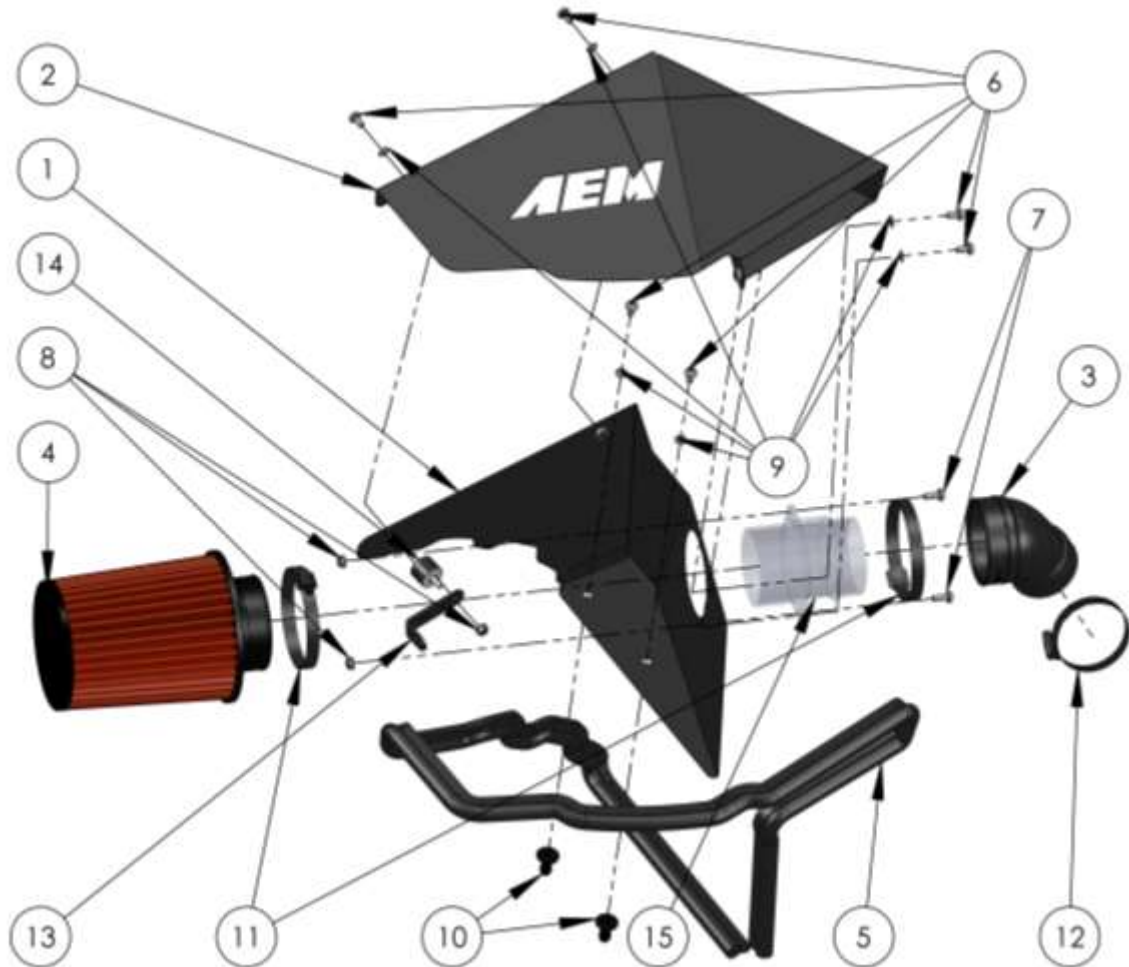
### 21-750

---

2013	Audi	A4	2.0T
2014	Audi	A4	2.0T
2015	Audi	A4	2.0T
2014	Audi	A5	2.0T
2015	Audi	A5	2.0T

Not legal for sale or use on any pollution controlled motor vehicle in California or states adopting California emission procedures. See [AEMIntakes.com](http://AEMIntakes.com) for CARB status on each part for a specific vehicle.

ITEM NO.	PART NUMBER	DESCRIPTION	QTY.
1	20-8547	HEAT SHIELD; 21-750 LOWER MILD STL, TB/PC	1
2	20-8548	HEAT SHIELD; 21-750 UPPER MILD STL, TB/PC	1
3	5-1096	COUPLER; 3.125"ID X 2.375"ID, 64DEG	1
4	21-2113DK	AIR FILTER ASSY 3.25 X 7" DRY	1
5	102460	EDGE TRIM; 3/4" BULB, TOP LOC, 75"L	1
6	07794	BOLT; M6X1.0 X 12MM BUTTONHEAD, SS	6
7	07730	BOLT; M6X1.0 X 16MM BUTTONHEAD, SS	2
8	RHNA-M6X100A2	NUT; M6X1.0, FLANGED, A2 SS	3
9	1-3016	WASHER, M6 x 12MM OD SS	6
10	8-186	MOUNT, PLASTIC AIRBOX	2
11	08620K	HOSE CLAMP #56, BLACK ZINC PLATED	2
12	08554K	HOSE CLAMP #40, BLACK ZINC PLATED	1
13	07195	"L" BRACKET	1
14	1228596	MOUNT, RUBBER M6 X 3/4" TALL M/F	1
15	MAF SENSOR HOUSING	(FROM VEHICLE; NOT INCLUDED)	1



Read and understand these instructions **BEFORE** attempting to install this product. Failure to follow installation instructions and not using the provided hardware may damage the intake tube, throttle body and engine.

**Tools Needed:**

Flat Screw Driver

8mm Socket

Socket Driver

T20 Torx Driver

## 1. Preparing Vehicle

- a. Make sure vehicle is parked on level surface.
- b. Set the parking brake.
- c. If engine has run in the past two hours, let it cool down.
- d. Disconnect negative battery terminal.
- e. Do not discard stock components after removal of the factory system.
- f. Open the air intake kit package and make sure all parts are included.

## 2. Removal of stock system



a. Use small pointed tool to depress & release the two left-most pins holding down the radiator top panel.



b. Pry back the panel to reveal and remove the Torx bits securing the factory dirty air duct assembly.



c. Squeeze the lower-most end of the dirty air duct assembly to release and remove it from the factory airbox.



d. Remove the pre-filter from the opposite end of the duct assembly as shown.





e. Disconnect MAF sensor and loosen the clamp securing the factory clean-air duct to the turbocharger.



f. Lifting from the turbo end of the duct and the opposite corner, remove the factory airbox assembly.



g. Use the Torx tool to remove the factory airbox mount bracket. The bolt will be re-used.



h. Use the Torx tool to separate the MAF sensor housing from the factory airbox. If the rubber feet shown in the lower right in the picture above came out of the vehicle with the airbox, put them back in their holes in the chassis rail.



i. Disassemble the dirty air duct assembly by squeezing as shown.

### 3. Installation of AEM® intake system.

- a. When installing the intake system, do not completely tighten the hose clamps or mounting hardware until instructed to do so.



- a. Assemble the lower heat shield components as shown according to the graphic on page 2 of this document leaving the edge trim loose at the upper left corner.



- b. Lower the assembly into the vehicle being careful to orient the hose clamps such that they can be accessed by tools to be tightened.



- c. Install the included bracket and soft-mount using the factory bolt as shown.



- d. Install the air filter. If an open element kit is desired, the edge trim can be installed around the lower heat shield edge as shown above. For better performance via colder air supply, add the upper heat shield/duct and hardware according the graphic on page 2 of this document continuing the edge trim along the edge of the upper heat shield as shown in step f (next page).



e. Factory air induction system.



f. Finished installation of AEM Intake System.

#### 4. Reassemble Vehicle

- a. Reinstall bolted portion of the dirty air duct assembly (without the pre-filter) and re-pin the radiator top panel.
- b. Position the components for the best fitment. Be sure that all components do not contact any unintended part of the vehicle.
- c. Re-connect the MAF sensor wiring harness.
- d. Check for proper hood clearance. Re-adjust components if necessary and re-tighten them.
- e. Inspect the engine bay for any loose tools and check that all fasteners that were moved or removed are properly tightened.
- f. Reconnect negative battery terminal and start engine. Let the vehicle idle for 3 minutes. Perform a final inspection before driving the vehicle.

#### 5. Service and Maintenance

- a. AEM Induction Systems requires cleaning the intake system's air filter element every 100,000 miles. When used in dusty or off-road environments, our filters will require cleaning more often. We recommend that you visually inspect your filter once every 25,000 miles to determine if the screen is still visible. When the screen is no longer visible some place on the filter element, it is time to clean it. To clean, purchase our Synthetic air filter cleaner, part number 1-1000 and follow the easy instructions.
- b. Use window cleaner to clean your powder coated AEM® components.

For technical inquiries  
e-mail us at  
[sales@aemintakes.com](mailto:sales@aemintakes.com)  
or  
call us at  
800.992.3000



## **AEM Air Intake System Warranty Policy**

AEM® warrants that its intake systems will last for the life of your vehicle. AEM® will not honor this warranty due to mechanical damage (i.e. improper installation or fitment), damage from misuse, accidents or flying debris. AEM® will not warrant its powder coating if the finish has been cleaned with a hydrocarbon-based solvent. The powder coating should only be cleaned with a mild soap and water solution. Proof of purchase of both the vehicle and AEM® intake system is required for redemption of a warranty claim.

This warranty is limited to the repair or replacement of the AEM® part. In no event shall this warranty exceed the original purchase price of the AEM® part nor shall AEM® be responsible for special, incidental or consequential damages or cost incurred due to the failure of this product. Warranty claims to AEM® must be transportation prepaid and accompanied with dated proof of purchase. This warranty applies only to the original purchaser of product and is nontransferable. Improper use or installation, use for racing, accident, abuse, unauthorized repairs or alterations voids this warranty. AEM® disclaims any liability for consequential damages due to breach of any written or implied warranty on all products manufactured by AEM®. Warranty returns will only be accepted by AEM® when accompanied by a valid Return Merchandise Authorization (RMA) number. Credit for defective products will be issued pending inspection. Product must be received by AEM® within 30 days of the date RMA is issued.

If you have a warranty issue, please call (800) 992-3000 and our customer service department will assist you. A proof of purchase is required for all AEM® warranty claims.

**Not legal for sale or use on any pollution controlled motor vehicle in California or states adopting California emission procedures. See [AEMIntakes.com](http://AEMIntakes.com) for CARB status on each part for a specific vehicle.**