



Equipped with AEM® Dryflow™ Filter  
No Oil Required!

## **INSTALLATION INSTRUCTIONS**

### **PART NUMBER: 41-1404**

---

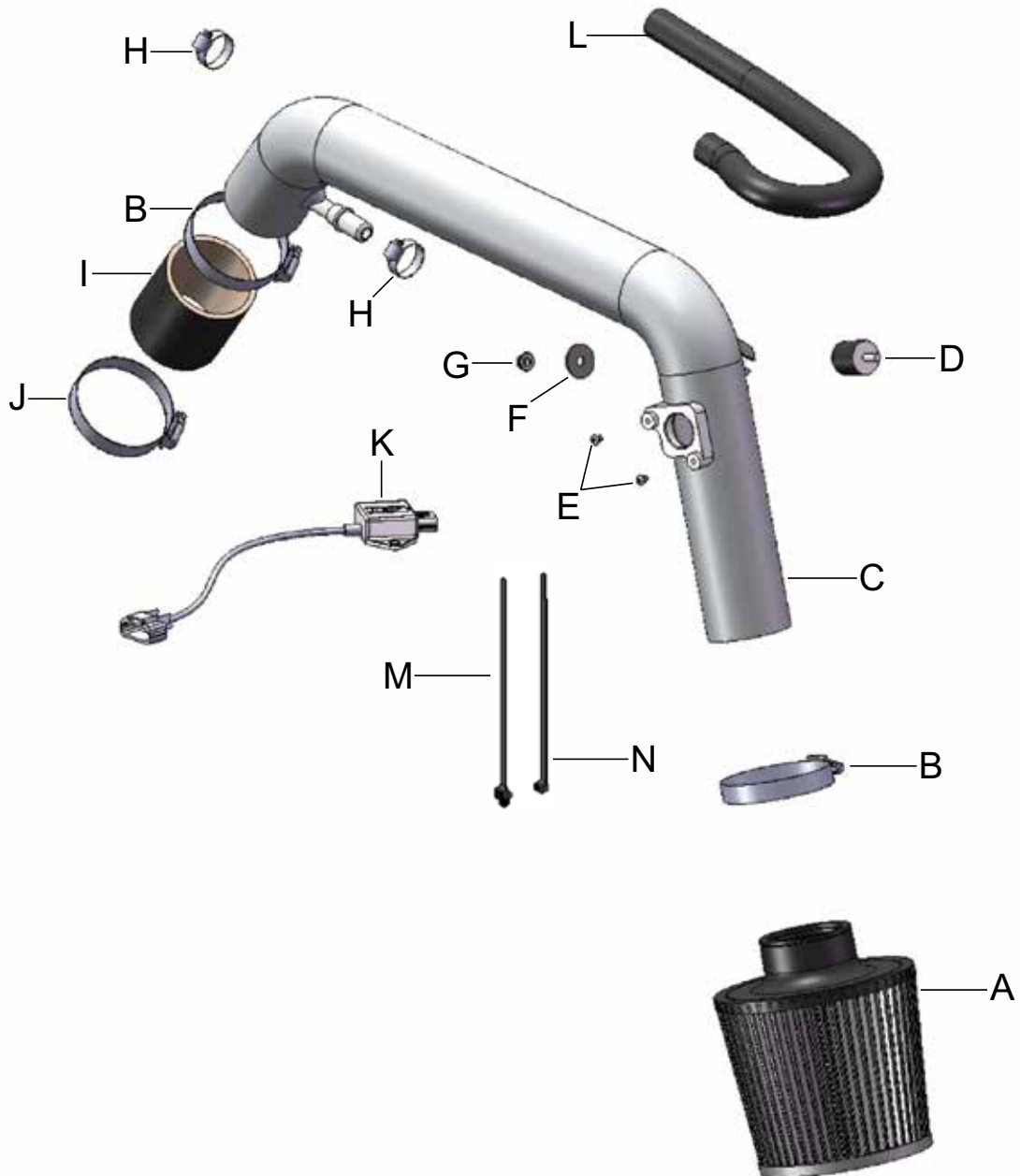
2008-2011 SCION XD L4-1.8L

**LEGAL IN CALIFORNIA ONLY FOR RACING VEHICLES  
WHICH MAY NEVER BE USED, REGISTERED  
OR LICENSED FOR USE UPON A HIGHWAY.**

See [aemintakes.com](http://aemintakes.com) for CARB status on each part for a specific vehicle

## PARTS LIST

	Description	Qty.	Part Number
A	Element Parts Kit 2.50 X 5" Dry Ele.	1	21-201D
B	1/2" Bnd. Hose Clamp, 2.15-3.00"	2	9440
C	Inlet Pipe	1	2-1417
D	Mount, Rubber 1" X 6mm	1	1228599
E	Bolt, Btn. HD M4-0.7 X 6mm	2	1-2051
F	Washer, 6mm Soft Mount	1	08160
G	Nut, M6 Hex Serrated	1	444.460.04
H	Hose Clamp, 1 1/16" Narrow	2	08411
I	Hose, Silicone 2.50x3" Blk	1	5-250
J	1/2" Bnd. Hose Clamp, 2.31-3.25"	1	9444
K	ETI Module; Scion XD, Programmed	1	40-1404-002
L	Hose; 5/8"ID X 25"L	1	5-7025
M	Zip Tie, 8" Tree Push-Mnt.	1	1-127
N	Zip Tie, 11.25 Long	1	21590



Read and understand these instructions **BEFORE** attempting to install this product. Failure to follow installation instructions and not using the provided hardware may damage the intake tube, throttle body and engine.

## 1. Preparing Vehicle

- a. Make sure vehicle is parked on level surface.
- b. Set parking brake.
- c. If engine has run in the past two hours, let it cool down.
- d. Disconnect negative battery terminal.
- e. Raise the front of the vehicle with a jack. Refer to your owner's manual for proper jack and jack stand placement to properly support vehicle. Support your vehicle using properly rated jack stands before wheel removal or while working under the vehicle.

**NEVER WORK UNDER A VEHICLE WITHOUT USING JACK STANDS.**

- f. Do not discard stock components after removal of the factory system.

## 2. Removal of stock system



a. Remove the hose from the valve cover inlet.



b. Unplug the MAF sensor wire harness from the MAF sensor.



c. Release the 2 clips that secure the airbox lid.



d. Loosen the hose clamp securing the inlet tube to the throttle body.





e. Lift the airbox lid from the lower portion of the airbox system.



f. Remove the inlet hose from the throttle body.



g. Lift the airbox lid to access and remove the clip securing the MAF sensor wire harness.



h. Remove the MAF sensor wire harness from the airbox lid.



i. Remove the upper airbox assembly from the vehicle.



j. Remove air filter element from the lower airbox assembly.



k. Remove the two 10mm bolts securing the lower airbox assembly.



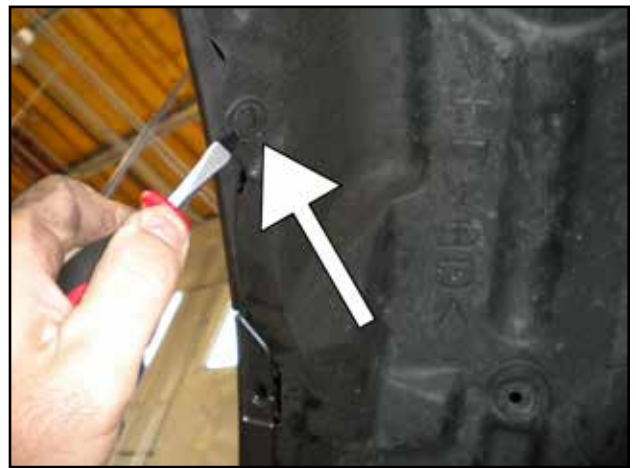
l. Rotate the lower airbox assembly and unclip the MAF sensor wire harness from the airbox.



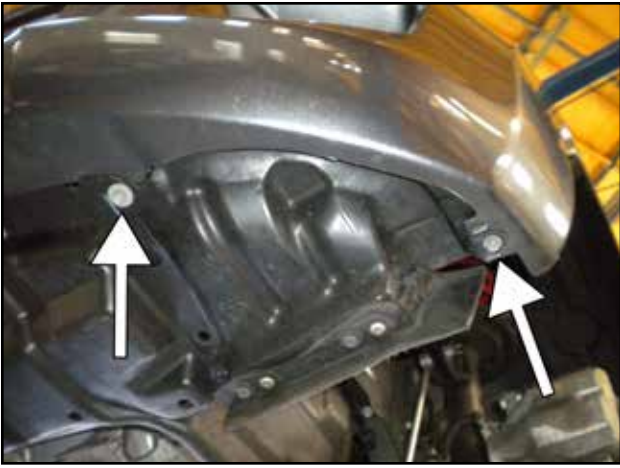
m. Remove the lower airbox assembly from the vehicle.



n. Remove the 5 clips securing the driver side fender liner.



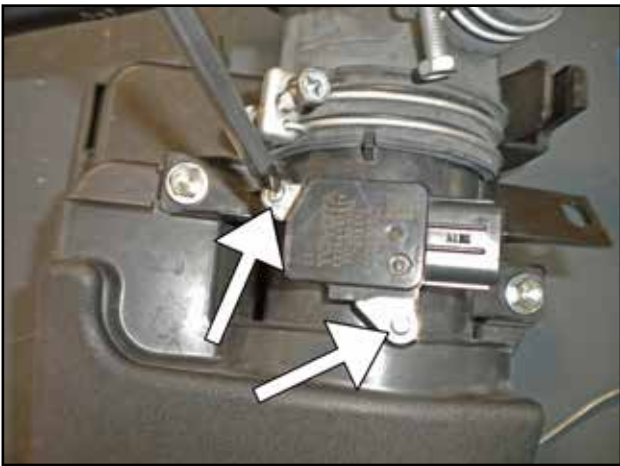




o. Remove the two bolts securing the driver side fender liner to the lower bumper.



p. Pull the driver side fender liner out of the way.



q. Remove the two bolts securing the MAF sensor to the airbox assembly, this was removed earlier in step 2i. Set the sensor aside in a safe area.

### 3. Installation of AEM® intake system.

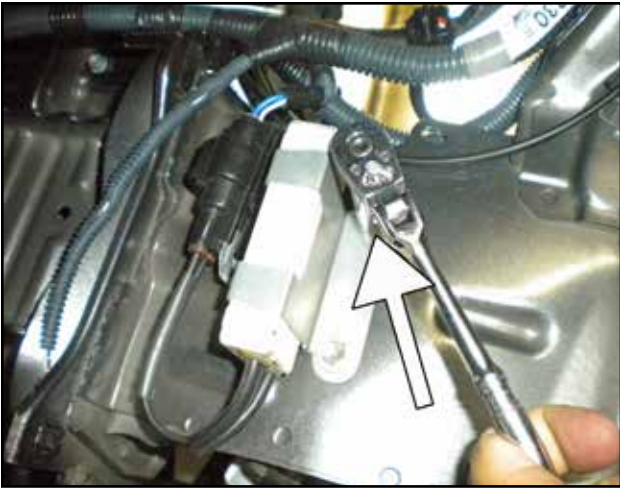
a. When installing the intake system, do not completely tighten the hose clamps or mounting hardware until instructed to do so.



b. Install the transition coupler and the two hose clamps onto the throttle body.



c. Install the MAF sensor into the intake pipe and secure using the supplied bolts.



d. Remove the upper bolt securing the bracket shown.



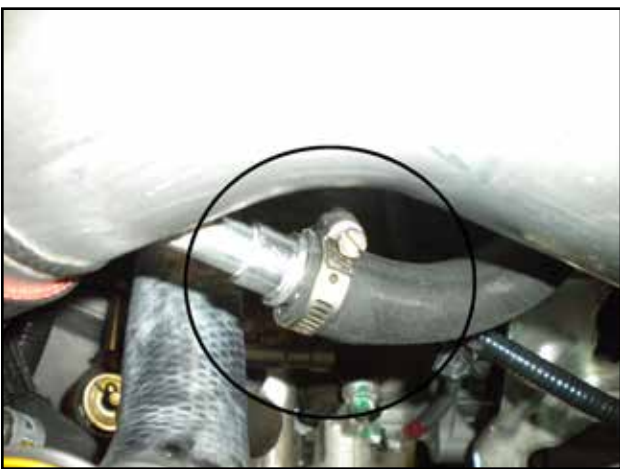
e. Install the rubber mount with the supplied washer and nut and loosely install.



f. Install the intake pipe into the coupler.



g. Align the intake pipe's bracket with the rubber mount and loosely secure using the washer and nut.



h. Connect the PCV hose to the intake pipe's nipple, loosely securing the hose with the supplied hose clamp.



i. Connect the PVC hose to the valve cover and loosely secure with the supplied hose clamp.





j. Install the AEM® Dryflow™ air filter. Ensure the air filter is properly secured to the intake pipe.



k. Connect the female connector of the ETI module to the MAF sensor. Also, reinstall the fender liner and clips removed in steps 2n and 2o.



l. Using the tree mount zip tie, secure the ETI module to the vehicle harness as shown.



m. Connect the vehicle side of the MAF sensor harness (female connector) to the ETI module. Secure the wiring harness with the zip tie as shown.



AEM® intake system installed.



#### 4. Reassemble Vehicle

- a. Position the inlet pipes for the best fitment. Be sure that the pipes or any other components do not contact any part of the vehicle. Tighten the rubber mount, all bolts, and hose clamps.
- b. Check for proper hood clearance. Re-adjust pipes if necessary and re-tighten them.
- c. Inspect the engine bay for any loose tools and check that all fasteners that were moved or removed are properly tightened.
- d. Reconnect negative battery terminals and start engine. Let the vehicle idle for 3 minutes. Perform a final inspection before driving the vehicle.

#### 5. Service and Maintenance

- a. It is recommended that you service your AEM® Dryflow™ filter every 20,000 miles for optimum performance. Use AEM Dryflow cleaning kit part # 21-110.
- b. Use aluminum polish to clean your polished AEM® intake tube.
- c. Use window cleaner to clean your powder coated AEM® intake tube. **(NOTE: DO NOT USE aluminum polish on powder coated AEM intake tubes).**

For technical inquiries  
e-mail us at  
sales@aemintakes.com  
or  
call us at  
800.992.3000

#### AEM Air Intake System Warranty Policy

AEM® warrants that its intake systems will last for the life of your vehicle. AEM will not honor this warranty due to mechanical damage (i.e. improper installation or fitment), damage from misuse, accidents or flying debris. AEM will not warrant its powder coating if the finish has been cleaned with a hydrocarbon-based solvent. The powder coating should only be cleaned with a mild soap and water solution. Proof of purchase of both the vehicle and AEM intake system is required for redemption of a warranty claim.

This warranty is limited to the repair or replacement of the AEM part. In no event shall this warranty exceed the original purchase price of the AEM part nor shall AEM be responsible for special, incidental or consequential damages or cost incurred due to the failure of this product. Warranty claims to AEM must be transportation prepaid and accompanied with dated proof of purchase. This warranty applies only to the original purchaser of product and is nontransferable. Improper use or installation, use for racing, accident, abuse, unauthorized repairs or alterations voids this warranty. AEM disclaims any liability for consequential damages due to breach of any written or implied warranty on all products manufactured by AEM. Warranty returns will only be accepted by AEM when accompanied by a valid Return Merchandise Authorization (RMA) number. Credit for defective products will be issued pending inspection. Product must be received by AEM within 30 days of the date RMA is issued.

If you have a warranty issue, please call (800) 992-3000 and our customer service department will assist you. A proof of purchase is required for all AEM warranty claims.

**LEGAL IN CALIFORNIA ONLY FOR RACING VEHICLES  
WHICH MAY NEVER BE USED, REGISTERED  
OR LICENSED FOR USE UPON A HIGHWAY.**

See [aemintakes.com](http://aemintakes.com) for CARB status on each part for a specific vehicle