



Equipped with AEM® Dryflow™ Filter  
No Oil Required!

## INSTALLATION INSTRUCTIONS

### PART NUMBER: 21-8502

---

2010	INFINITI	QX56	V8-5.6L	SEE * NOTE
2004-2009	INFINITI	QX56	V8-5.6L	C.A.R.B. E.O. # D-670
2010-2012	NISSAN	Armada	V8-5.6L	SEE * NOTE
2005-2009	NISSAN	Armada	V8-5.6L	C.A.R.B. E.O. # D-670
2010-2011	NISSAN	Titan	V8-5.6L	SEE * NOTE
2004-2009	NISSAN	Titan	V8-5.6L	C.A.R.B. E.O. # D-670
2004	NISSAN	Pathfinder	V8-5.6L	C.A.R.B. E.O. # D-670

\* **NOTE:** Legal in California only for racing vehicles which may never be used upon a highway

## PARTS LIST

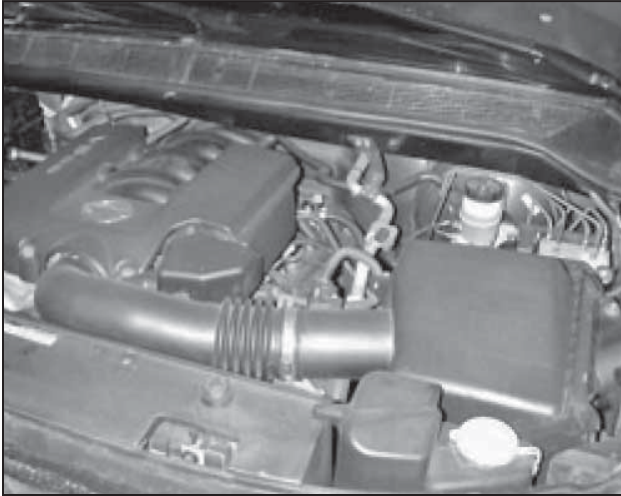
Description	Qty.	Part Number
Element Parts Kit; 3.25 X 9" Dry Ele.	1	21-2109DK
Inlet Pipe	1	2-85021
Heat Shield; TB/PC	1	20-8502
Hose, Silicone 3.25 X 1.5" Blk.	1	5-322
Edge Trim, 10"	1	8-4010
Edge Trim, 12"	1	8-4012
Stud; M6-1.00 M/M, Rubber Mntd.	1	07027
Hose; 5/8"ID X 6"L	2	5-7006
Edge Trim, 8"	1	8-4008
Edge Trim; 1/16" Gap, 7"L	1	102452
Zip Tie, 6 Long	1	1-113
Connector, Plastic 5/8" Straight	2	8-140
Bolt; Hex M5-.8, 12mm	4	1-2098
Bolt; Hex/Flange M8-1.25 X 20	1	1-2025
Washer, #10 X 1/2 Flat Zinc	8	1-3039
Washer; 1"D X 1/4 Hole Fender	2	08160
Nut; M5-.8, 8mm Nylock	4	1-2099
Nut; M6 Hex Serrated	2	444.460.04
1/2" Bnd. Hose Clamp, 2.90"-3.75"	2	9452
Hose Clamp #10 Mini	2	08411
1/2" Bndhose Clamp, 3.15"-4.00"	1	9456

Read and understand these instructions **BEFORE** attempting to install this product. Failure to follow installation instructions and not using the provided hardware may damage the intake tube, throttle body and engine.

## 1. Preparing Vehicle

- a. Make sure vehicle is parked on level surface.
- b. Set parking brake.
- c. If engine has run in the past two hours, let it cool down.
- d. Disconnect negative battery terminal.
- e. Do not discard stock components after removal of the factory system.

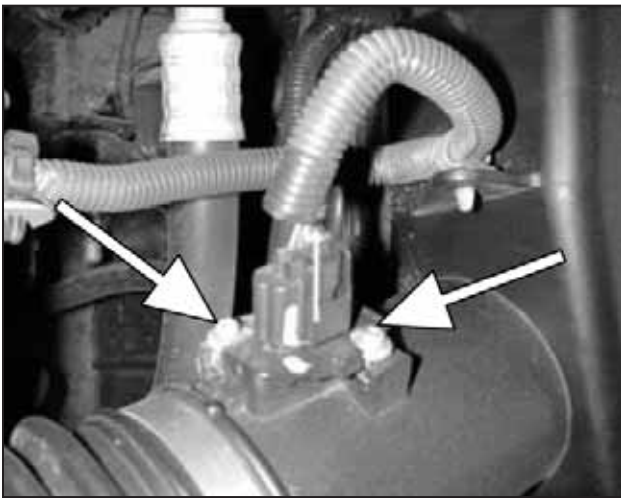
## 2. Removal of stock system



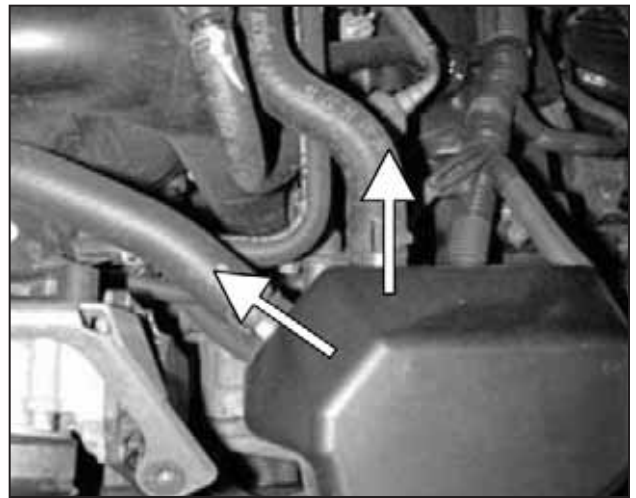
a. Stock air box system.



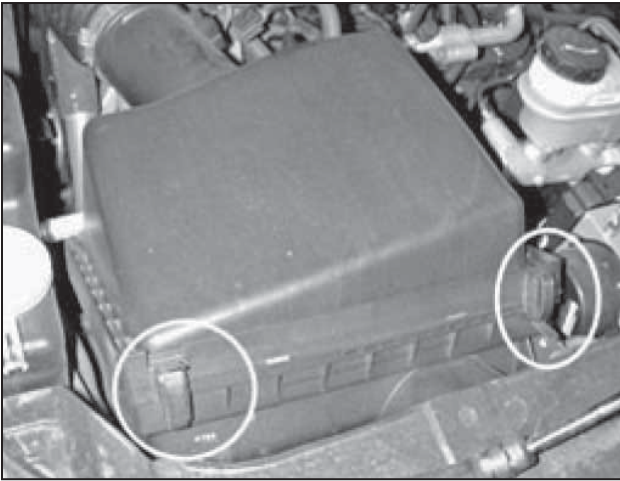
b. Remove the two screws securing the engine cover and remove the cover.



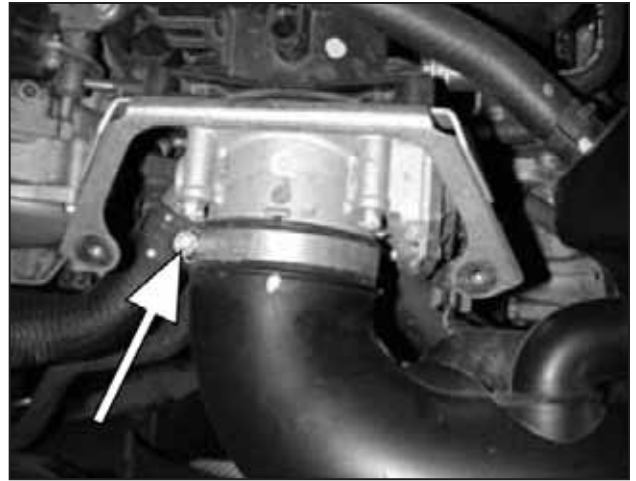
c. Unplug the Mass Air Flow (MAF) Sensor and pinch the rivet to release the wiring harness. Release the two screws retaining the MAF Sensor. Gently remove the MAF Sensor and set aside. Handle the MAF Sensor with care to avoid damaging it.



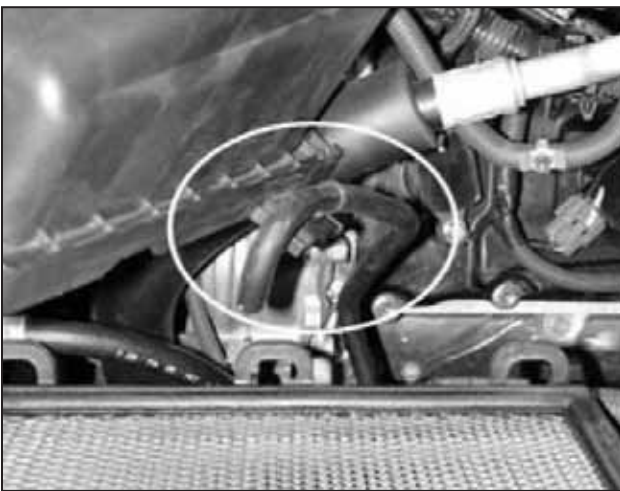
d. Pinch the two hose clamps and pull the breather hoses from the air box.



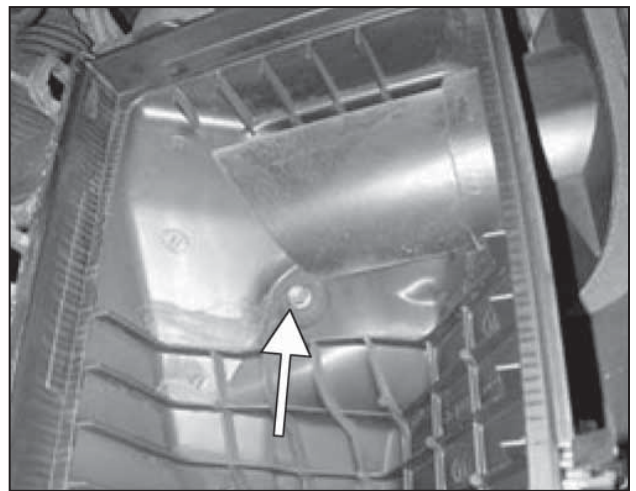
e. Release the two clips on the side of the air box.



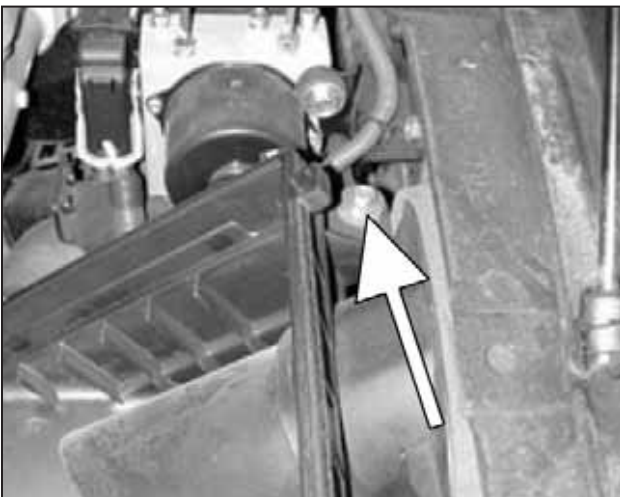
f. Loosen the hose clamp at the throttle body.



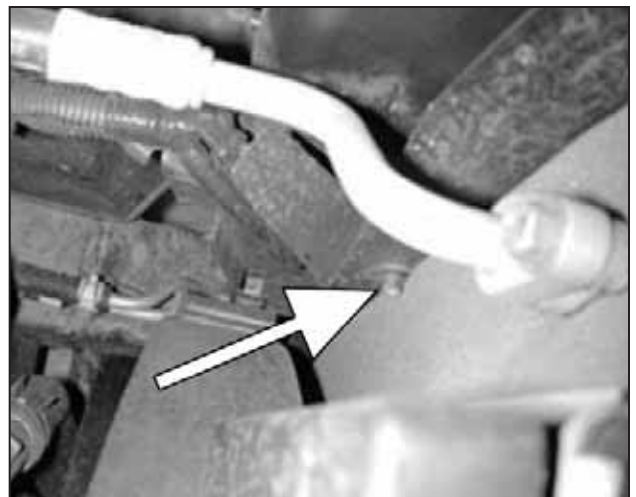
g. Raise the upper air box.  
**4WD Equipped Vehicles:** Disconnect the differential breather hose from the air box.



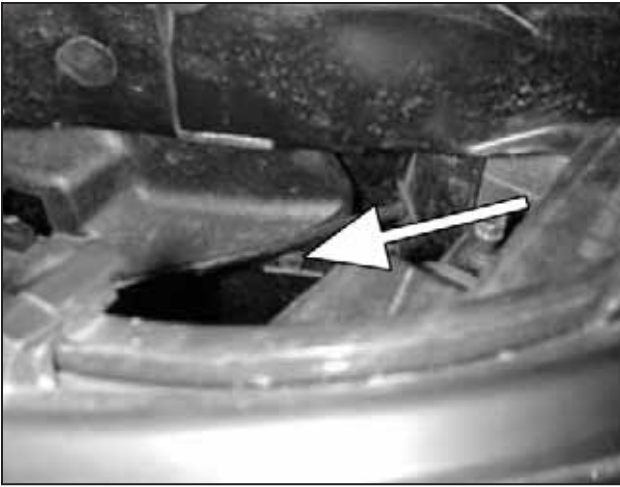
h. Remove the upper air box and air filter. Loosen the bolt on the bottom of the lower air box.



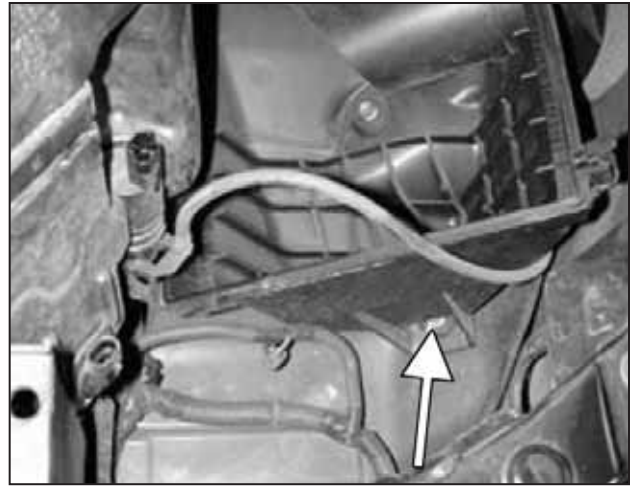
i. Remove the upper bolt; set aside for later use during the installation of the AEM® intake system.



j. The washer bottle must be removed. Remove the small screw next to the left side of the radiator.



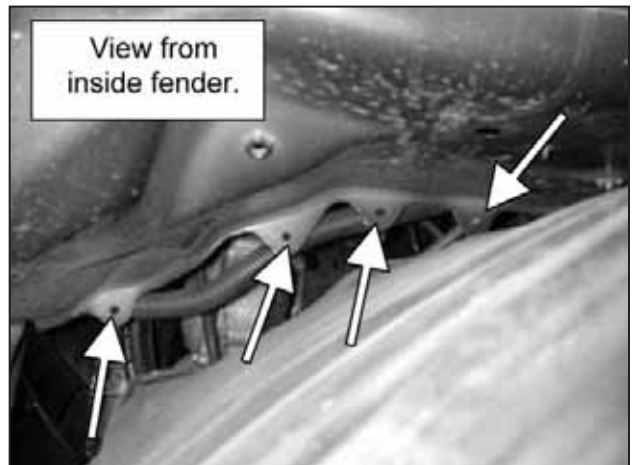
k. Remove the screw behind the left headlight.



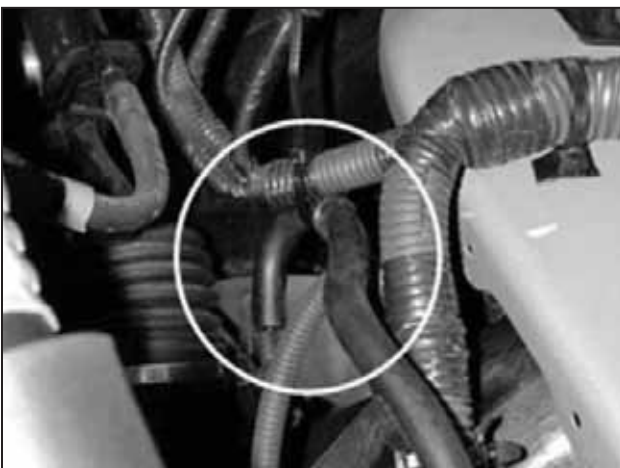
l. Unplug the two electrical connectors on the rear of the bottle, but leave the washer hose connected. Move the bottle out of the way and loosen the third bolt retaining the air box.



m. Remove the air box and reinstall the washer bottle. Plug in the two connectors.



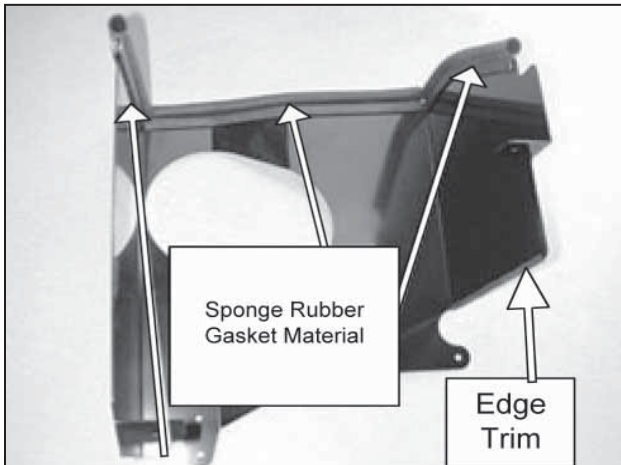
n. Release the fender liner retaining clips and partially remove to gain access to the four rivets that secure the wiring harness. Pinch the rivets and unclip them from the sheet metal.



o. **4WD Equipped Vehicles:** Secure the differential breather hose to the wiring harness with the supplied zip tie.

### 3. Installation of AEM® intake system.

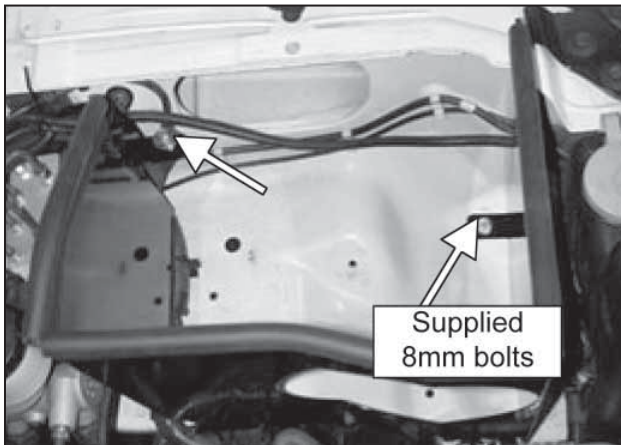
a. When installing the intake system, do not completely tighten the hose clamps or mounting hardware until instructed to do so.



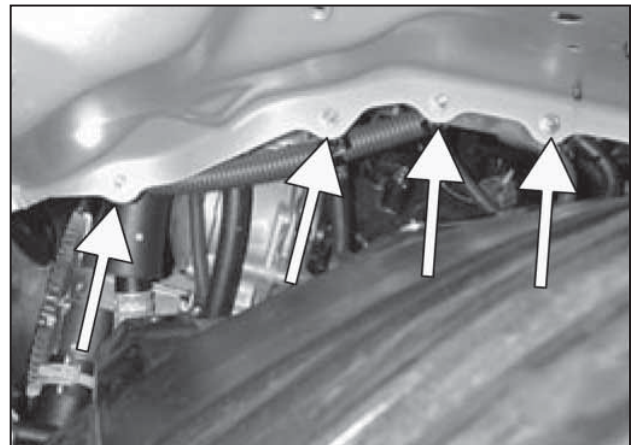
b. Install edge trim along the top of the heat shield and rubber edge trim to the bottom edge of the heat shield.



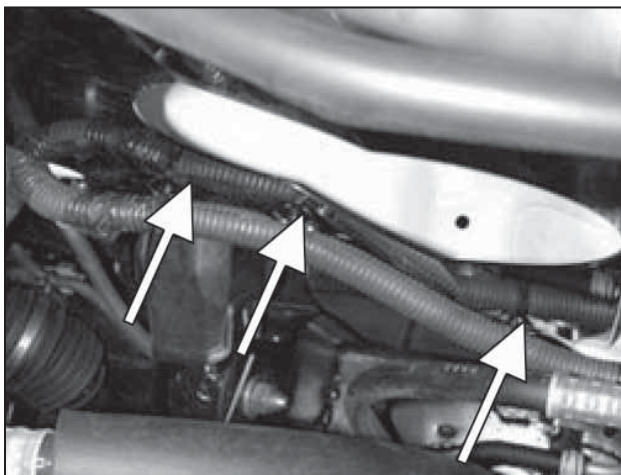
c. Place the heat shield in the engine bay.



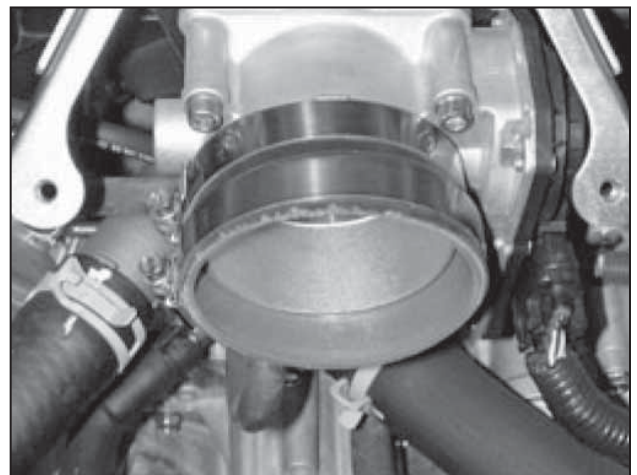
d. Secure the upper heat shield tab with the stock bolt. Secure the lower heat shield tab with the supplied 8mm bolt.



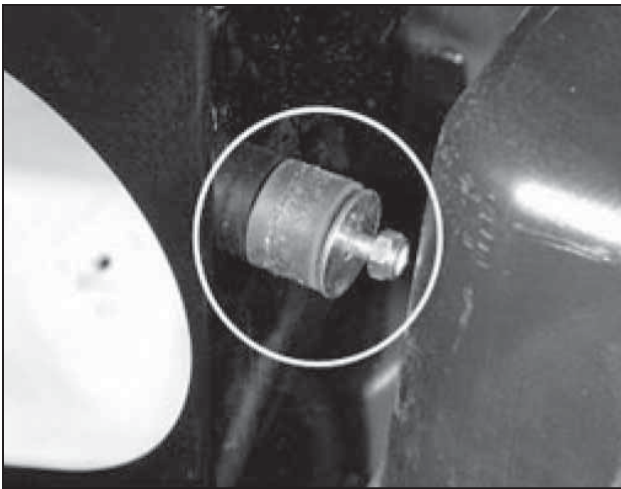
e. Secure the heat shield to the fender with the four 5mm bolts, eight 13mm washers and four 5mm lock nuts provided.



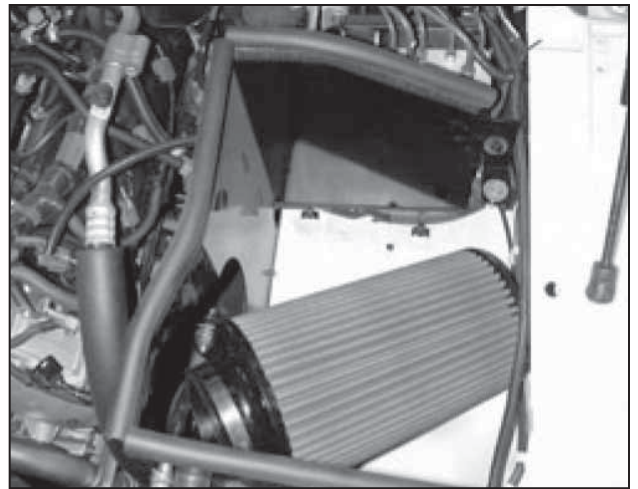
f. Reinstall the wire harness clips into the holes in the heat shield.



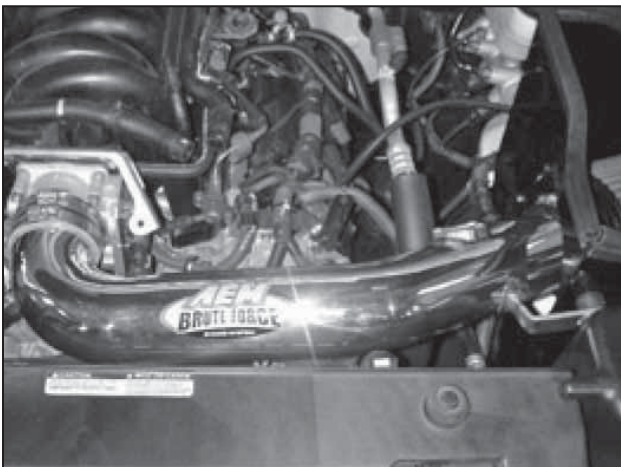
g. Place the silicone coupler and size 52 hose clamps on the throttle body.



h. Install the rubber mount into the hole on the heat shield using one 25mm washer and one 6mm lock nut.



i. Set the air filter inside the heat shield.



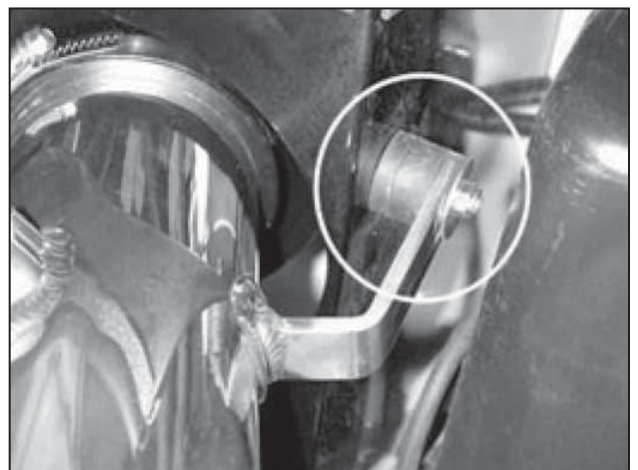
j. Place the intake pipe in the engine bay as shown.



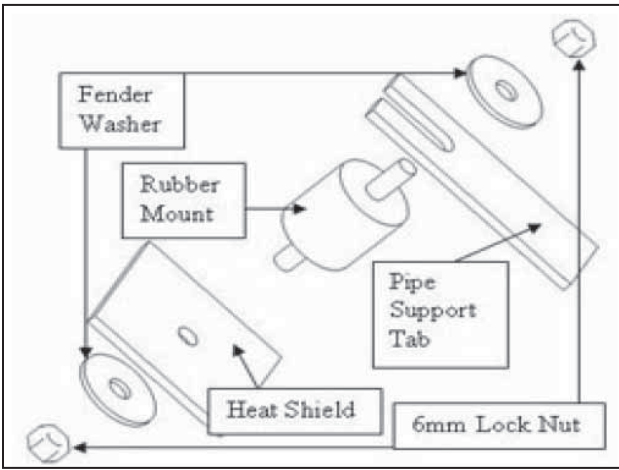
k. Attach the air filter to the end of the intake pipe. Tighten the air filter hose clamp.



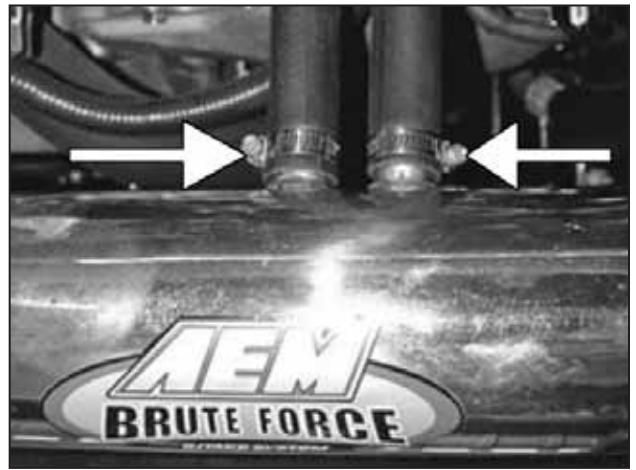
l. Insert the other end of the intake pipe into the silicone coupler at the throttle body.



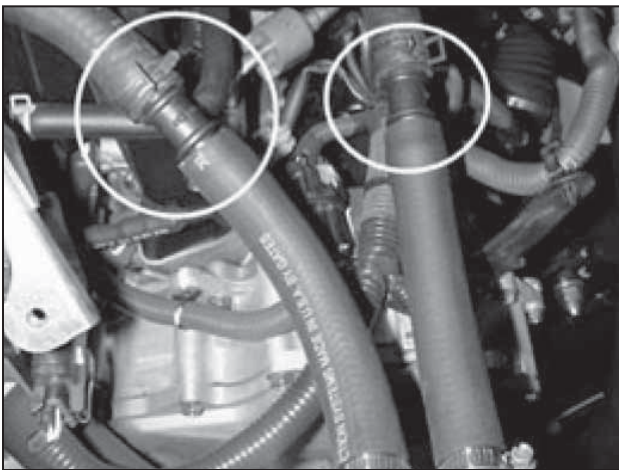
m. Secure the intake pipe support tab to the rubber mount. Refer to step 3n for proper assembly.



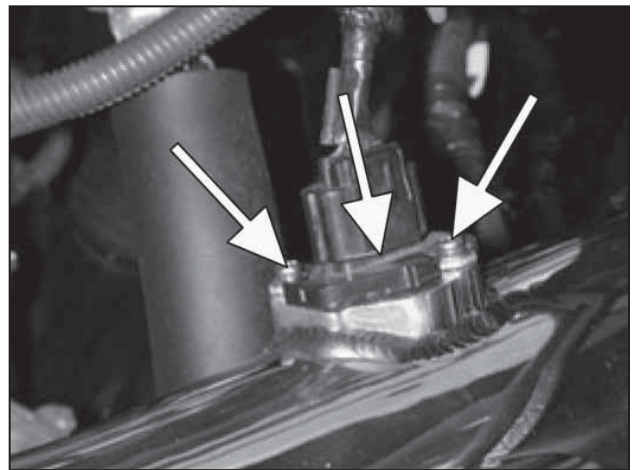
n. Proper rubber mount installation.



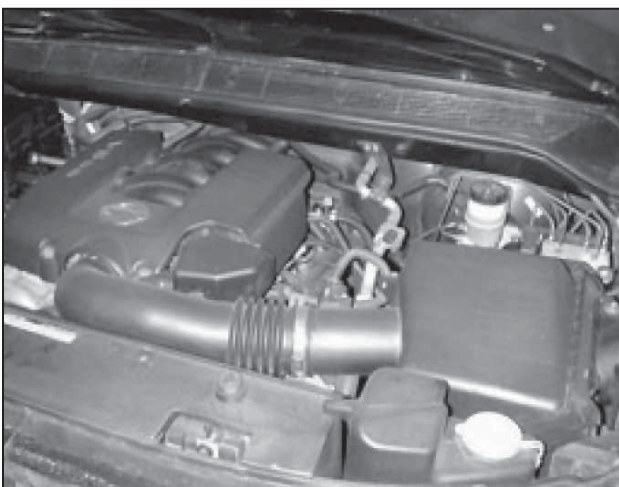
o. Attach the two supplied breather hoses to the intake pipe with the supplied size 10 hose clamps.



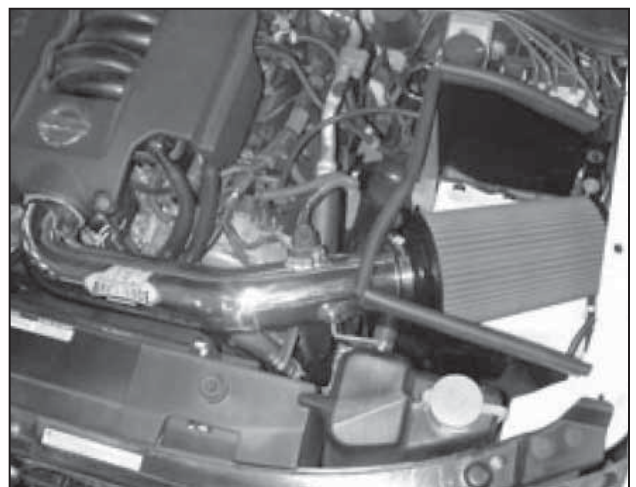
p. Connect the factory breather hoses to the open ends of the hoses with the supplied nylon barbed fittings.



q. Install the factory MAF sensor into the intake pipe using the stock screws. Plug in the MAF sensor harness connector. Reinstall the engine cover.



Factory air box system installed



AEM® intake system installed



#### 4. Reassemble Vehicle

- a. Position the inlet pipes for the best fitment. Be sure that the pipes or any other components do not contact any part of the vehicle. Tighten the rubber mount, all bolts, and hose clamps.
- b. Check for proper hood clearance. Re-adjust pipes if necessary and re-tighten them.
- c. Inspect the engine bay for any loose tools and check that all fasteners that were moved or removed are properly tightened.
- d. Reconnect negative battery terminal and start engine. Let the vehicle idle for 3 minutes. Perform a final inspection before driving the vehicle.

#### 5. CARB Sticker Placement

- a. The C.A.R.B. exemption sticker, (attached), must be visible under the hood so that an emissions inspector can see it when the vehicle is required to be tested for emissions. California requires testing every two years, other states may vary.

#### 6. Service and Maintenance

- a. AEM Induction Systems requires cleaning the intake system's air filter element every 100,000 miles. When used in dusty or off-road environments, our filters will require cleaning more often. We recommend that you visually inspect your filter once every 25,000 miles to determine if the screen is still visible. When the screen is no longer visible some place on the filter element, it is time to clean it. To clean, purchase our Synthetic air filter cleaner, part number 99-0624 and follow the easy instructions.

- b. Use window cleaner to clean your powder coated AEM® intake tube.

**NOTE: DO NOT USE aluminum polish on powder coated AEM® intake tubes.**

For technical inquiries e-mail us at sales@aemintakes.com or call us at 800.992.3000
---

#### AEM Air Intake System Warranty Policy

AEM® warrants that its intake systems will last for the life of your vehicle. AEM will not honor this warranty due to mechanical damage (i.e. improper installation or fitment), damage from misuse, accidents or flying debris. AEM will not warrant its powder coating if the finish has been cleaned with a hydrocarbon-based solvent. The powder coating should only be cleaned with a mild soap and water solution. Proof of purchase of both the vehicle and AEM intake system is required for redemption of a warranty claim.

This warranty is limited to the repair or replacement of the AEM part. In no event shall this warranty exceed the original purchase price of the AEM part nor shall AEM be responsible for special, incidental or consequential damages or cost incurred due to the failure of this product. Warranty claims to AEM must be transportation prepaid and accompanied with dated proof of purchase. This warranty applies only to the original purchaser of product and is nontransferable. Improper use or installation, use for racing, accident, abuse, unauthorized repairs or alterations voids this warranty. AEM disclaims any liability for consequential damages due to breach of any written or implied warranty on all products manufactured by AEM. Warranty returns will only be accepted by AEM when accompanied by a valid Return Merchandise Authorization (RMA) number. Credit for defective products will be issued pending inspection. Product must be received by AEM within 30 days of the date RMA is issued.

If you have a warranty issue, please call (800) 992-3000 and our customer service department will assist you. A proof of purchase is required for all AEM warranty claims.