

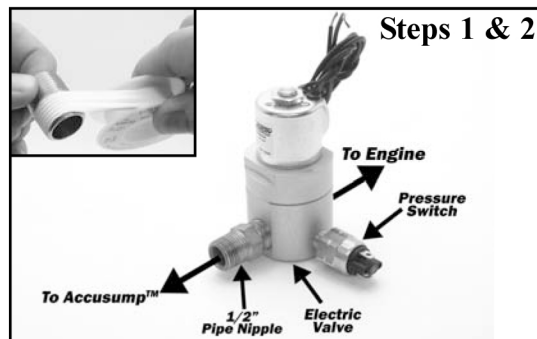


232 Branford Road
North Branford, CT 06471
Order Line: (203) 481-9460
Tech Line: (203) 481-9943
Fax Line: (203) 481-9641
www.cantonracingproducts.com

HOW TO INSTALL YOUR EPC ELECTRIC VALVE

PARTS #24-271X, #24-273X, #24-275X and Convert Kits

- 1) Install the provided 1/2" N.P.T. pipe nipple into the "IN" end of the electric valve using teflon tape to seal the threads.
- 2) Install the pressure switch into the "pressure switch port" using teflon tape to seal the threads.
- 3) Install the valve onto the Accusump™ by threading the pipe nipple end into the 1/2" N.P.T. port on the Accusump™. Again using teflon tape to seal the threads. You may need to remove the blow off valve temporarily from the Accusump™ for this step.

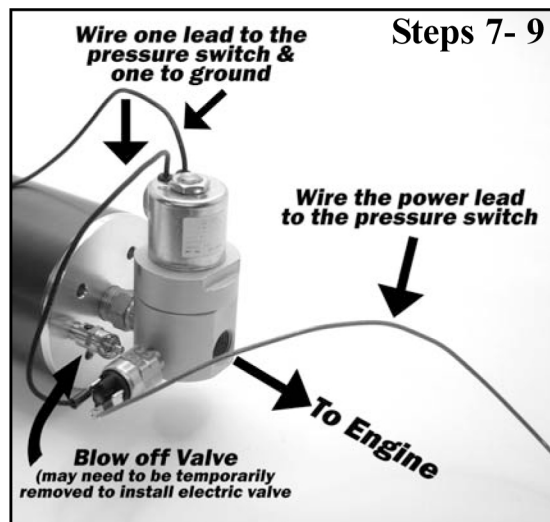


WARNING* Do not use the valve solenoid as a handle for installation. Use a wrench. Bent valve shafts and damaged solenoids due to improper installation are not covered under warranty.

- 4) Locate an accessory terminal in your fuse panel that is energized when the ignition is on. On applications without a fuse panel, an accessory terminal on the ignition switch can be used. This terminal should only be energized when the ignition is on. If the lead is not fused, a 4 amp fuse should be installed.
- 5) Install the toggle switch in a convenient location. Power coming from the ignition switch or accessory terminal should run through the toggle switch. This will enable the toggle switch to disable the unit in a situation where the ignition is left on but you do not want the Accusump™ active. When the toggle switch is in the on position the EPC electric valve will be open whenever the ignition is on and the oil pressure is low.
- 6) Run 16-gauge multi-strand wire from the ignition lead to one side of the toggle switch. From the other side of the toggle switch, run a wire to where the electric valve solenoid is positioned.

Flip over to back to continue instructions.

- 7) The electric valve has two lead wires exiting the solenoid body. Choose one to be your power wire, either of the leads can be used. Cut the chosen wire to about 6 inches so it can neatly be wired to the pressure switch. Strip back about 1/4" of insulation and install a female connector on the wire's end. Attach it to one of the pressure switch terminals.
- 8) Run the other unused lead on the electric valve to a chassis ground.
- 9) To finish wiring the valve assembly, install a female connector on the power lead running from the toggle switch and connect it to the unused terminal on the pressure switch.



- 10) Plumb your oil feed line to the open end of the electric valve and your installation is complete.

