



Specification Manual for Models 2010, 2300, 4010, 4011, 4150, 4160, 4165, 4175, and 4500

WARNING! These instructions must be read and fully understood before beginning installation. Failure to follow these instructions may result in poor performance, vehicle damage, personal injury, or death. If these instructions are not fully understood, installation should not be attempted.

TABLE OF CONTENTS:

Read This First	2
Locating the List Number	2
Adjustment Specifications	3
Model 2010	3
Model 2300	3
Model 2300 (3 x 2 BBL.)	4
Model 4010	4
Model 4011	5
Model 4150	5
Model 4160	6
Model 4165/4175	8

READ THIS FIRST:

This instruction sheet contains the technical specifications required for recalibrating your carburetor. To locate your list number, use the examples in the **LOCATING THE LIST NUMBER** section below. Locate the list number in this manual. It's a good ideal to highlight the technical information for the carburetor, so that it may be located easily during the rebuild. When reassembling the carburetor, use the specifications given to make the correct adjustments for the list number of your carburetor. Use the **REBUILD AND ADJUSTMENT** manual during reassembly for a step by step guide for performing each of the adjustments. This kit may also contain universal part assortments, resulting in throw away or excess in the number of parts that are actually required for servicing any one carburetor. In the case of duplicate gaskets or parts, compare with old pieces.

It is our intent to provide the best possible products for our customers: products that perform properly and satisfy your expectations. Should you need information of parts assistance, please contact our technical service department at 1-270-781-9741, Monday through Friday, 7 a.m. to 5 p.m. Central time. Please have the part number of the product you purchased when you call.

LOCATING THE LIST NUMBER:

The List number for a Model 2010, 2300, 4010, 4011, 4150, 4160, 4165, or 4175 carburetor can be found on the **right side of choke air horn**. The List number for the 4500 can be found on the top of the main body casting. Below the list number is a date code that will contain no more than four (4) digits. See Figures below.

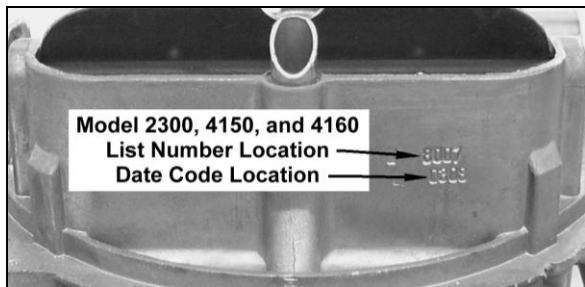


Figure 1

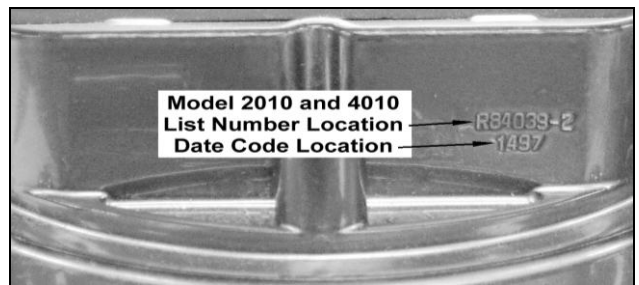


Figure 2



Figure 3



Figure 4

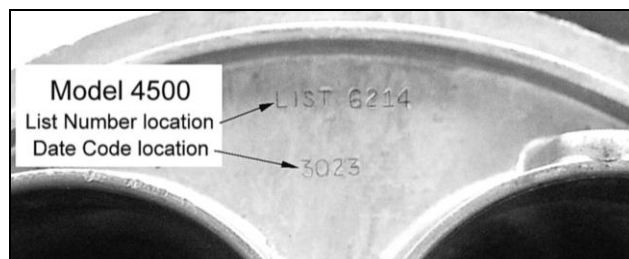


Figure 5

ADJUSTMENT SPECIFICATIONS:

MODEL 2010				
List Number	Choke Index	Pump Cam Position	Dechoke	Choke Quality
82010, 82011, 82012		No. 1		
82020, 82021	Index	No. 1	.300"	.175"-.225"

MODEL 2300							
List Number	Dry Float	Choke Index	Dashpot	Pump Cam Position	Dechoke	Vent Valve	Choke Quality
1281, -1 -2, 1282, -1, -2, 1379, -1, -2, 1380, -1, -2, 1486, -1, 1681, 1779, 1780, 1952, 2867, 2881	13/16"	Index		#1	.060"		
1281-3, -4, 1282-3, -4, 1779-1	3/4"	Index	.075"	#1	.065"		
1371	13/16"	1NL	.105"	#1			
1371-1, -2, 1412, -1, 1837, 1866, 1868	13/64"			#1			
1406, -1, 1552, -1	3/4"	1NR	.075"	#1	.070"		
1406-1	3/4"	1NR		#1	.070"		
1710, 1711, 2011, -1, 2013, -1, 2233, 2235, 2487, 2489, 2582, -1, 2583, 2977, -2, -3, 2978, 3551-1, 3855-1, 3863, -1, -2, 3870, -1, 3939-2, -3, 3991, -1, -2, 4077, 4081, -1, -2, 4306, 4412-1, 4574, -1, 6391, -1, -2, -3, 6470, 9011, 84412				#1			
1710-1, -2, -4, -5, -6, 1711-1, 2012, -1, 2234, 2488, 2976-1, -2, -3, 2978-2, -3, 3551, 3552, -1, -2, 3855, 3865, -1, -2, 3868, -1, -2, 3872, -1, 4079, -1, -2, 4083, -1, -2, 4308, -1, 6392			.075"	#1			
1637, 1681-1, 1682-1	11/16"	Index	.075"	#1	.070"		
1780-1	3/4"	Index	.075"	#1		.060"	
1797-1, 2437, 2492, 2499, 2868, 2882				#1	.060"		
1798-1, 1806, -1, 1807, -1, 1844, 1924, -1, 2040, -1, 2049, 2050, 2065, 2228, 2436, 2603, 3208, 3485, 3486		1NR	.075"	#1	.060"	.060"	
1835, 1974	13/64"			#1			
1836	13/64"		.075"	#1			
1843, 2934		1NR	.070"	#2			
1863, 1864, -1, 2014, 2015, 2031, 2032, 3114, 3487		2NL	.075"	#1	.060"		
2415, 7448, 7487, 87448				#2			
2442, 2463, 2640		Index		#2	.060"		
2442-1, -2, 3075		2NL	.090"	#2	.060"		
2463-1, -2		2NL	.090"	#2		.060"	
2520-1, -2, -3, -4, 3488, 3502-2, -3, 3503-2, -3, 3679-1, 3867, -1, -2, 3869, -1, -2		1NL	.075"	#1			.240"
3679-2		1NL		#1			.240"
3679-3				#1			.240"
3864		Index		#1			.240"
3864-1, -2, 3866, -1, -2		Index	.075"	#1			.240"
3871-1, 3873-1, -2		1NR	.075"	#1	.170"		.170"
3936-2, -3, -4		Index	.075"	#1	.200"		.250"
3937-2		Index		#1			.225"
4014, 4032, 4476, 4477				#1		.060"	
4015			.075"	#1		.070"	
4027				#2		.060"	
4078, 4080		1NL		#1	.230"		.220"
4078-1, -2, 4080-1, -2, 7508, -1, 7561, 8000		1NL		#1			.220"
4082, 4084, -2		2NL	.075"	#1	.180"		.195"
4082-1, -2, 4084-1		2NL		#1			.195"
4174, -1	5/16"			#1		.060"	
4307, 4309, -1		1NL	.075"	#1			
4439, 4446		Index		#1	.204"	.060"	.075"
4517, 6986		1NR	.130"	#2	.204"	.060"	.173"
4517-1, -2, 6513		Index	.130"	#2	.204"	.060"	.191"
4593, -1, 4595, -2, 6207, -1		Index		#1	.230"		.280"
4594, -1, -2, 6206, -1, 6379, -1, -2			.105"	#1			
4595-1, 4643-1, -2, -3, 6294, 6541		Index	.130"	#2	.204"	.060"	.159"
4643, 6433, -1		Index	.130"	#2	.204"	.060"	.082"
6150, 6317		Index		#2	.300"		.140"
6221		1NR	.105"	#2	.204"		.149"
6221-1, -2		1NL		#2	.204"		.149"
6294-1, -2, -3, -4, 7008, -1, 7541, 8022		1NR		#2	.204"		.096"
6317-1, 6846, 7036, 80263		3NL		#1	.300"		.140"
6380, -1, -2, 6386-1, -2		4NL	.105"	#1	.230"		.200"
6380-3, 6386-3			.090"	#1			.185"

6393, -1, 6394, -1, -2		1NL	.075"	#1	.230"		.200"
6394-3			.060"	#1	.200"		.185"
6433-2, 80011		Index		#2	.200"	.015"	.070"
6433-3, 7108, -1, -2		1NL		#2	.204"		.110"
6425	5/16"			#1			
6513, -1, -2		Index		#2	.204"		.185"
6855, -1, -2		2NL		#2	.204"		.096"
7127, 7333, 7334		2NL	.130"	#1	.205"		
7318		2NR		#2	.240"		.149"
7451-1		1NL		#2	.200"		.096"
7508, -1, 7509, -1, 8227, 8228, 8640, 80006		1NR		#2	.200"		.090"
7561, 8000-1, 8223, 8639, 8641, 8701		1NR		#2	.200"	.015"	.090"
7707		2NR		#2	.240"		.149"
7717, 7718, 7719, 8651		1NR		#2	.200"		.120"
8000, 8209		1NR		#2	.204"	.015"	.090"
8208		1NR		#2		.075"	.090"
8210		1NR		#2		.015"	.090"
8211		1NR		#2	.200"	.015"	.120"
8224, 8226		1NL		#2	.200"		.090"
8225		Index		#1			
8916		2NL		#1	.240"		.200"
9035, 9562, 9562-1, 9876, 80003		1NR		#2	.200"	.015"	.080"
9117, 9473, 9643, 80000		1NR		#2	.204"	.020"	.090"
9543		1NL		#2	.204"	.020"	.090"
9558		Index		#2	.204"	.020"	.090"
9697		1NR		#2	.200"		.110"
9927, 9954		2NL		#2	.204"	.020"	.090"
9965, 80179		1NR		#2	.200"	.020"	.080"
9965-1		1NR		#2	.200"		.080"
9981, 80143, 80216		Index		#2	.204"	.020"	.120"
50072-1		1NR		#2	.300"		
50417		3NL		#1	.300"		.140"
50461, 80320		Index		#1	.300"		.140"
80001		2NR		#2	.219"		.073"
80001-1, 80121		2NR		#2	.200"		.073"
80095, 80120		NA			NA	NA	NA
80151		Index		#2	.204"	.020"	.201"
80312				#1			.250"
80313		5NL		#2	.300"		.250"
80316		5NL		#2	.300"		.365"
80321		3NL		#2	.300"		.250"
80221		1NR		#2	.200"	.020"	.090"
80222		1NR		#2	.200"		.096"

MODEL 2300 3 x 2 Bbl.

List Number	Dry Float	Pump Cam Position	Vent Valve	Choke Quality	Dechoke	Cam Index
3659, 4790		N/A	N/A	N/A	N/A	N/A
3660, 3888, 4175, -1, 4365, -1, 4382, -1, 4383, -1, 4393, -1, -2, 4394-1, -2, 4412, 4671, 4672, 4789, 6105, -1, 6107, -1, 6405, 6406		#1				
4055, -1, 4065, -1	1/2"	#1	.085"	.260"		
4144, -1, 4670		#1	.015"	.190"	.380"	.160"
4374		#1	.015"	.140"	.150"	
4374, -1, 4669		#1	.015"	.355"	.380"	
4375		#1	.085"	.355"	.380"	
4376		#1	.085"	.190"	.380"	
4391		#1	.085"	.140"	.156"	
4392		#1	.085"	.070"	.156"	
4783, 7448		#2				
4782		#2	.085"	.355"	.380"	
4791, 6197		#1	.015"	.330"	.355"	.150"
4792, 6198		#1	.015"	.240"	.355"	
6106, 6404		#1	.015"	.170"	.355"	

MODEL 4010

List Number	Choke Index	Pump Cam Position	Choke Quality	Dechoke
84014, 84015, 84016, 84017		No. 2		
84021		No. 2	.185"	.328"
84024, 84026	Index	No. 2	.185"	.328"

MODEL 4011

List Number	Choke Index	Pump Cam Position	Choke Quality	Dechoke
84010, 84011, 84012, 84013, 84020		No. 1		
84018	Index	No. 1	.185"	.328"
84023	Index	No. 1	.305"	.275"

MODEL 4150

List Number	Prim. Dry Float Adj.	Sec. Dry Float Adj.	Pump Cam Position	Cam Index	Choke Quality	Dechoke	Bowl Vent	Choke Index	Dash - Pot
1272, -1, 1482	13/16"	3/4"	#1				.060"	Index	
1273, -1, -2, 1483	13/16"	3/4"	#1			.180"	.060"	Index	.075"
1312, -1, 1748, -1, 1957, -1, 1958, -1	13/16"	3/4"	#1			.180"	.060"	1NL	
1312-2, -3, -4			#1			.180"	.060"	1NL	.105"
1405, 1551, 1619, -1	13/16"	3/4"	#1				.060"	1NR	.075"
1426, 1736	13/16"	3/4"	#1				.060"	2NR	
1427, 1616, 1737, -1, 1738, -1	13/16"	3/4"	#1				.060"	2NR	.075"
1550	13/16"	3/4"	#1				.060"	1NR	
1740	13/16"	1/2"	#1				.060"	1NR	.075"
1740-1			#1				.060"	1NR	.075"
1748-2			#1			.180"	.060"	1NL	
2464			#1			.180"	.060"	1NL	.105"
2668, 2687, 2818-1, 2855, 2919, 2926, 4118			#1					Index	
2818			#1					3NL	
2927, 4223, 4237, -1, -2, 4318, -1, 4455, 4543, 4572, -1, -2, 4578, 4776-1, 4777-1, 4778-1, -2, 4779-2, 4780-2, -3, 4781-1, -2, -3, 6299, 6895, 7138, 7410, 7411, 7785, 7927, 8156, 8162, 9714, 9715, 9716, 9717, 60031, 60034, 60037, -1, 60041, -1, 60043, -1, 6012, 84780, 84781			#1						
2953, -1, 3124, 3130, 3255, -1, 3310, -1	3/8"	1/2"	#1					Index	
3043			#1				.050"	Index	
3044			#1				.060"	1NL	
3045, 3074			#1				.060"	1NL	.105"
3245			#1		.190"	.265"	.085"		
3246, 3274, 3613	11/32"	15/32"	#1		.350"	.350"	.085"		
3259, 3668, 3680	3/8"	1/2"	#1						
3417, 3418, -1, 3910, 3911, 4045, 4490, 4800-1, 4801, -1, 4802, -1, 4803, -1, 6238, 6239			#1		.350"	.350"			
3530	11/32"	15/32"	#1				.085"	Index	.075"
3556-1, 4489, -1, 4491-1, 4554-1			#1		.350"	.350"	.017"		
3557	11/32"	15/32"	#1				.085"	1NR	
3607			#1		.190"	.265"	.085"		
3787-1, 4201, 4295, 4323-8, 4324-8, 4486, 4493, -1, 4558, -1, 4559, 4584, 4776, 4777, -1, -2, -3, 4778, -1, -2, -3, 4779, -1, -2, -3, -4, 4781, -2, 4788, -1, 4830, 4880, -1, 6109, 6803-4, 6877, 6974-1, 7029-2, 7191, 8105-1, 8139-1, 8243-2, 8737, -1, 80110, 84776, 84777, 84778, 84779			#1						
3793			#1				.085"	Index	
3794			#2				.085"	Index	.110"
3795, -1			#1				.085"	Index	.110"
3796			#2				.085"	Index	.075"
3796-1			#2				.085"	Index	
3806, 3807	5/16"	9/32"	#1		.190"	.265"	.085"		
3926			#1				.085"		
3977	11/32"	15/32"	#1						
4053, 4555, 6647			#1		.300"	.350"			
4069			#1	.080"		.180"	.080"		
4088			#1				.080"		
4129			#1	.080"		.320"	.075"	1NR	

4168			#2	.080"		.300"	.075"	1NR	
4174			#2	.060"		.300"	.075"	1NR	
4234			#1	.080"		.180"		Index	.110"
4264, -1, 4320, -1			#1						.075"
4279			#2	.080"		.300"		2NR	.060"
4280			#2	.080"		.300"		1NR	.100"
4296			#2			.350"		2NL	
4312, -1, -2, -3			#1		.205"	.230"		2NL	
4313, -1, -2, -3			#1		.205"	.230"		2NL	.075"
4319, -1			#1	.080"	.205"	.230"		3NL	
4321			#1	.205"	.230"			3NL	.075"
4321-1			#1	.080"	.205"	.230"		3NL	.075"
4346			#1		.300"	.350"	.060"		
4399			#1	.080"	.205"	.180"		2NR	
4491, 4554, 4556, 4557			#1		.300"	.350"	.017"		
4492			#1		.350"	.350"	.060"		
4511			#2			.310"	.075"		
4513			#2	.080"		.300"		4NR	.100"
4513-1			#2			.330"			.140"
4514			#2	.080"		.300"		3NR	.100"
4514-1			#2			.330"			.200"
4515			#2			.300"		4NR	
4515-1			#2			.330"			
4516			#2			.300"		3NR	
4516-1			#2			.330"			
4545, 4546			#2						
4556			#2			.300"	.075"		.100"
4599, -1			#1	.040"	.280"	.230"		Index	
4601, -1			#1						.105"
4601-2			#1						.100"
4602, -1, -2			#1	.040"	.280"	.230"		Index	.105"
4609			#2	.080"		.300"		1NR	.100"
4627, 4628			#2	.100"	.300"	.300"		2NR	
4647			#2			.300"			
4653			#2			.310"			
4698			#1			.300"	.080"	1NL	
4742			#2		.166"	.340"		Index	.128"
4800			#1		.350"	.320"			
4815	11/32"	15/32"	#1		.350"	.350"			
6127			#2		.300"	.300"		2NR	.100"
6128			#2	.100"	.300"	.300"			.115"
6128-1			#2		.300"	.300"			
6129			#2			.310"			.115"
6189			#1	.080"	.170"	.180"		2NR	
6238-1, 6239-1			#1		.350"	.350"			
6284, -1			#1			.127"			
6390, -1, -2, -3			#1	.040"	.200"	.230"		4NL	.105"
6708, -1, 6709			#1				.015"		
7035			#1	.080"	.160"	.230"		Index	
7035-1			#1	.080"	.160"	.200"			
7923, 7924, 9922			#1				.060"		
80145			#2		.159"	.290"	.090"		
80159, 80309			#2		.140"	.300"		4NL	
80311			#1		.480"	.350"		5NL	
80311-2			#1		.480"	.320"		5NL	
80330			#1		.420"	.350"		5NL	
80378			#1		.310"	.350"		5NL	
80570			#2			.290"		2NR	
80670, 80670-1			#2			.290"		2NR	
80770, 80770-1			#1			.300"		2NR	
80870			#1			.300"		2NR	
90670, 90670-1			#1			.290"		2NR	

MODEL 4160

List Number	Prim. Dry Float Setting	Sec. Dry Float Setting	Pump Cam Position	Choke Qualify	Choke Index
1732, 1733, 1734, 1736, 1737	13/64"	3/4"	#1		1 NR
1737-1	1/2"	3/4"	#1		1 NR
1738-1, 1740-1			#1		2 NR
1740	13/16"	1/2"	#1		1 NR
1847, 1848, -1, 1849, 1850, 2112, 2142, -1, 2143, 2328, 2599, 2652, -1, 2804, 3113, 3115, 3489, 3490, 3491, 3492, 3602, -1, 4005, 4006, 4473, 81850			#1		Index
1850-1, -2, -3, 2805, 2929, 3116, 3139, -1, 3140, 3301, 3310-2, -3, 3360, 3361, 3394, -1, 3411, 4224, 4235, 4236, 4239, 4397, 4577, 4604, 6299-1, 83310, 83311, 83312, 9015			#1		
1971, 2052, 3916, 4581, 8159, 9776			#2		
2143-1	1/2"	3/4"	#1		Index
2973, 3085	7/16"	9/16"	#1		
3140-1, 3230, 3267, 3268, 3370, 3420, 3605, 3606, 3608, 6444, -1, -2, 6777, -1			#1	.175"	
3201, 3202, 3203, 4699,			#1		1 NL
3300, 3410	1/2"	5/8"	#1		3 NL
3667			#2	.175"	
3391			#1		1 NL
3575, -1, -2	15/64"	17/64"	#1	.260"	
3609			#1	.200"	
3667, -1, -2	15/64"	17/64"	#1	.200"	
3810	5/16"	11/32"	#1	.190"	
3814, 3815, 3836, 3837, 3838	5/16"	1/32"	#1	.175"	
3839	11/32"	11/32"	#1	.200"	
3916-1	7/16"	9/16"	#1		
3918, -1, -2, -3, 4749	15/64"	17/64"	#1	.280"	
4166, -1, -2, -3, 4735, 4440, -1, -2, -3	15/64"	17/64"	#1	.205"	
4201, 4202			#1		3 NL
4217	15/64"	17/64"	#1	.170"	
4217-1, -2, -3, -4, 4736, -1, -2, 4738, -1, -2	15/64"	17/64"	#1	.420"	
4218, 4360	15/64"	17/64"	#1	.080"	
4218-1, -2, -3, -4, 4360-1, -2, -3, 4366, -1, 4368, -1, -2, 4369, -1, -2, 4737, -1, -2, 4739, -1, -2	15/64"	17/64"	#1	.080"	
4452			#2	.106"	1 NL
4552-1, 7985, 7986, 8007, 8123, 8181, 9834, -1, -2, 89834			#2	.159"	Index
4548			#2	.159"	1 NR
4549, 6591, 7053			#1	.230"	3 NR
4550			#1	.230"	
4550-1			#1	.035"	1 NR
4608, 80264			#2		Index
4668	7/64"	9/32"	#1	.195"	
4668-1	15/64"	17/64"	#1	.195"	
4734	7/64"	9/32"	#1	.420"	
4749-1, -2, -3	15/64"	17/64"	#1	.234"	
6151, 6152, 7159, 9393, 9394, 50148, 50462, 50463, 50468, 80319, 80364			#2	.140"	Index
6160, -2, 6253, 6255, 6257, 6290, -1	7/64"	13/64"	#1	.195"	
6191, -1, 6193, -1	7/64"	13/64"	#1	.410"	
6231, 6495			#1	.170"	2 NR
6252, 6254, 6256	7/64"	13/64"	#1	.340"	
6267, -1, -2, 7049			#2	.190"	1 NR
6270, -1, 6538	7/64"	13/64"	#1	.234"	
6291, -1, 6619-1, 6829, 6809, 6919, 6979, -1, 6989, 7009-1, 7010, 7478, 7987			#1	.150"	Index
6407			#2	.140"	3 NL
6444, -1, 6777			#1	.170"	
6444-3			#1	.155"	
6515	7/64"	9/32"	#1	.250"	
6520, 6576, 7413			#2	.221"	4 NR
6538	7/64"	13/64"	#1	.220"	
6590, 6730, 6887, 7053-1, 7262, 7850, 8207			#1	.230"	1 NR
6619			#2	.159"	2 NL
6729, 6949, -1			#1	.195"	Index
6839, 6946, -1, 66947, 6948, -1			#1	.180"	Index
7009			#2	.159"	4 NR
7010, 9626			#1	.159"	Index
7128			#2	.140"	

7163			#1	.140"	
76446			#2	.201"	1 NL
7850, 7154, 7974			#2	.090"	Index
8004, 8005, 8006			#2	.190"	1 NL
8408, 8409, 80341			#1	.200"	Index
8410, 8412, 8416, 8589			#1	.200"	2 NR
8411			#1	.200"	1 NR
8414			#1	.200"	4 NR
8415			#3	.190"	2 NR
8418, 8419, 8420, 8422			#1	.240"	2 NR
8590			#1	.221"	Index
9002, 9219			#2	.169"	Index
9013, 9210			#2	.159"	
9040			#1	.180"	1 NR
9050			#2	.201"	2 NR
9051			#2	.200"	1 NR
9254			#2	.159"	Index
9392, 50412			#1	.120"	Index
9874			#1	.210"	
50263, 80265			#2	.140"	2 NR
50399, 50405, 80262			#2	.140"	1 NR
50419-1, -2, 50469, 80319-1			#1	.140"	2 NR
50464, 50470, 80318, -1			#1	.140"	1 NR
80265					
80315			#2	.250"	5 NL
80383			#1	.228"	3 NL
80391			#2	.310"	5 NL
80403			#1	.250"	5NL
80452			#2	.159"	1NL

MODELS 4165 and 4175

List Number	Prim. Dry Float Adj.	Sec. Dry Float Adj.	Pump Cam Primary	Pump Cam Secondary	Choke Qualify	Choke Index
6210, 6211, 6212, 6263, 6262, 6263, 6468	Parallel	Parallel	#2	#1	.090"	N/A
6210-1, -2, -3, 6211-1, 6468-1, -2, 6854, 8679, 8700	3/16 T	13/64 H	#2	#1	.090"	N/A
6499	Parallel	Parallel	#2	#1	.090"	1NR
6497, 7054	Parallel	Parallel	#2	#1	.070"	2NR
6498, 6772, 6773	Parallel	Parallel	#2	#1	.070"	
6528	Parallel	Parallel	#1	#1	.105"	
6774, 6853, 7002-1, 7004-1, 7005-1, 7006-1, -2, 8302, 8546	3/16 T	13/64 H	#2	#1	.070"	
6926, 6926-1, 7002, 7004, 7005, 7006	Parallel	Parallel	#2		.070"	
7001	parallel	Parallel	#2	#1	.110"	
7351	3/16 T	13/64 H	#2		.096	Index
7397	3/16 T	13/64 H	#2		.070"	2NR
7855	3/16 T	13/64 H	#2		.086"	
8059, 8059-1	3/16 T	13/64 H	#2		.106"	1NR
8276	3/16 T	13/64 H	#2		.100"	
8879	3/16 T	13/64 H	#2		.080"	
9895, 80073, 80125, 80139, 80140, 80155	3/16 T	13/64 H	#2	N/A	.096"	Index
9923			#2		.116"	
9948, 9976, 80128			#2		.120"	1NR
80130-2			#2		.218" - .238"	Index
80328-2, 80390			#2		.200" - .240"	Index
80391			#2		.300± .02	5NL
80555	3/16 T	13/64 H	#2	N/A	.096"	3NL

199R-10015-1
Revision Date: 5-26-11