

INSTRUCTIONS FOR 2015+ MUSTANG SINGLE & DUAL REPLACEMENT PILLAR

2650-1890-77



QUESTIONS:

If after completely reading these instructions you have questions regarding the operation or installation of your instrument(s), please contact AutoMeter Technical Service at **866-248-6357**.

You may also email us at service@autometer.com.

Additional information can also be found at http://www.autometer.com/tech_faq.aspx

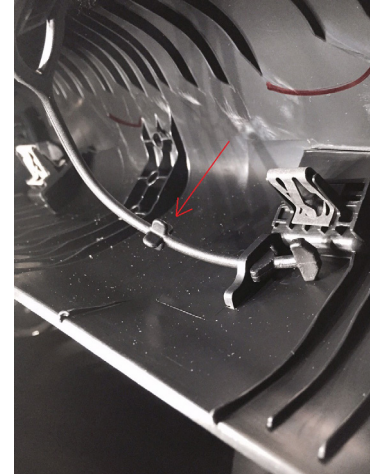
Please refer to your gauge instructions for details on gauge installation. Typically, you would install gauges and route the harness, tubing, and wiring up to the pillar after removal of the factory pillar and prior to installing the replacement pillar. Be sure to leave plenty of slack in the connections to the gauges. Ideally, you'll want to have at least 6-12 inches of wire or tubing coming out of the gauge hole with the pillar fully mounted. This will allow for easy connection to the gauge. The gauges are press fit and no brackets or retaining hardware is required to hold the gauges into the pillar.



1. **CAUTION:** Please note the speaker is still connected. Do not pull the pillar all the way out at this step. Insert fingers behind factory pillar at top. Pull factory pillar away from the steel "A" pillar towards you while sitting in the driver's seat until clips have released. Then pull the pillar upward, towards the headliner, releasing the tail section from the dash area.



2. Lean factory pillar as shown to gain access to the speaker



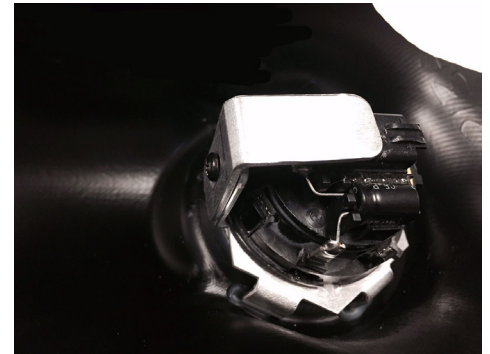
3. Release tether from factory pillar. You will need to slide both tabs on the tether through the slot by twisting the tether 45 degrees to align the last tab.



4. Press tab on factory connector down. Pull connector away from housing (towards the wires) to disconnect the speakers.



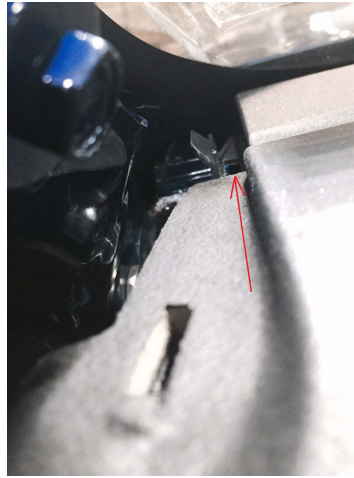
5. Remove speaker from factory pillar. Reinstall the speaker into the AutoMeter pillar mount, making sure the electrical connector points away from the "L" bracket.



6. Position L bracket over speaker. While pressing down on the L bracket, tighten the Phillips head screw. Reconnect the wiring to the speaker.



7. Align the tabs on the speaker cover with the cutouts in the A-pillar and snap into place.



8. Install the AutoMeter pillar. Be sure to guide the tab on the pillar into the slot in the dash. This is very important; if the tab is not properly aligned into the slot, the pillar will not fit correctly.



9. Pull the pillar away from the vehicle and install the tether. You will need to insert the first tab, twist the tether 45 degrees and insert the second tab.



10. Insert provided screw the pillar mount. Align clip so that the screw will thread into the top portion of the factory clip retainer as shown. Tighten screw until pillar is snug and the gaps have been closed. Be careful not to overtighten.



11. If a gap is present along the lower portion of your weather-stripping and the pillar, insert your fingers through the gauge opening and press the inside of the pillar outward to pop into place.

12. At this point you can attach your gauges to their harnesses, tubing, or wiring, then press fit into the pillar.

12 MONTH LIMITED WARRANTY

AUTOMETER Products, Inc. warrants to the consumer that all AUTOMETER High Performance products purchased from an Authorized AUTOMETER Reseller will be free from defects in material and workmanship for a period of twelve (12) months from date of the original purchase. Products that fail within this 12 month warranty period will be repaired or replaced at AUTOMETER's option, when determined by AUTOMETER that the product failed due to defects in material or workmanship. This warranty is limited to the repair or replacement of parts in the AUTOMETER High Performance product and the necessary labor done by AUTOMETER to effect the repair or replacement of the AUTOMETER High Performance product. In no event shall AUTOMETER's cost to repair or replace an AUTOMETER High Performance Product under this warranty exceed the original purchase price of the AUTOMETER High Performance Product. Nor shall AUTOMETER Products, Inc. be responsible for special, incidental or consequential damages or costs incurred due to the failure of an AUTOMETER High Performance Product. This warranty applies only to the original purchaser of the AUTOMETER High Performance Product and is non-transferable. This warranty also applies only to AUTOMETER High Performance Products purchased from an Authorized AUTOMETER Reseller. All implied warranties shall be limited in duration to the said 12 month warranty period. Breaking the instrument seal, improper use or installation, accident, water damage, abuse, unauthorized repairs or alterations voids this warranty. AUTOMETER disclaims any liability for consequential damages due to the breach of any written or implied warranty on all products manufactured by AUTOMETER Products, Inc. For a comprehensive listing of Un-Authorized Auto Meter Resellers please visit www.autometer.com/autometerlocator/index/unauthorized.

FOR SERVICE SEND TO: **AUTOMETER PRODUCTS, INC.** 413 W. Elm St., Sycamore, IL 60178 USA (866) 248-6357

Email: service@autometer.com