

Installation Instructions Precision Sport Shifter

Fits: 2008-2013 Corvette
C6 (including Z06)
Catalog # 45034

WORK SAFELY! For maximum safety, perform this installation on a clean, level surface and with the engine turned off. Place blocks or wedges in front of and behind both rear wheels to prevent movement in either direction.

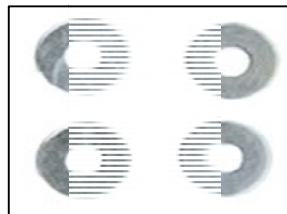
CAUTION: To avoid any possibility of bodily injury or damage to vehicle, do not attempt installation until you are confident that the vehicle is safely secured and will not move.

This **B&M Precision Sport Shifter** has been designed to work on most 2008-2013 C6 Corvette model vehicles. It has been engineered to greatly reduce shift throw and improve shifter feel. Check the parts and tools lists at the beginning of these instructions for the supplied parts and the tools required to install your B&M Precision Sport Shifter.

PARTS



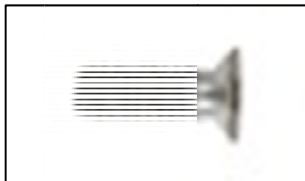
B&M Shifter



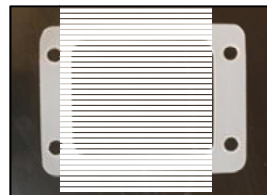
Washer (2)



Spacer (2)



**M5x0.8 Bolt (1)
M6x1.0 Bolt (1)**



Gasket



**1/4"-20 Bolt (4)
& Washer (4)**

TOOLS



**7mm, 10mm, 7/16",
3/8" Socket**



Ratchet & Extension



Channel Locks



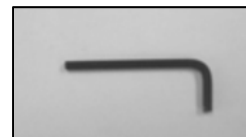
**T-15, T-20, T-25,
T-40 Torx Socket**



**Small Flathead &
Phillip Screwdriver**



**Trim Panel
Removal Tool**



**Allen Wrench
(3mm, 4mm)**

1. Remove bolts securing arm rest and remove the arm rest.

TOOLS: Ratchet, Extension, T-15 Torx Socket



2. Remove covers of center console trim plate with small flathead screwdriver and remove (2) screws on center console.

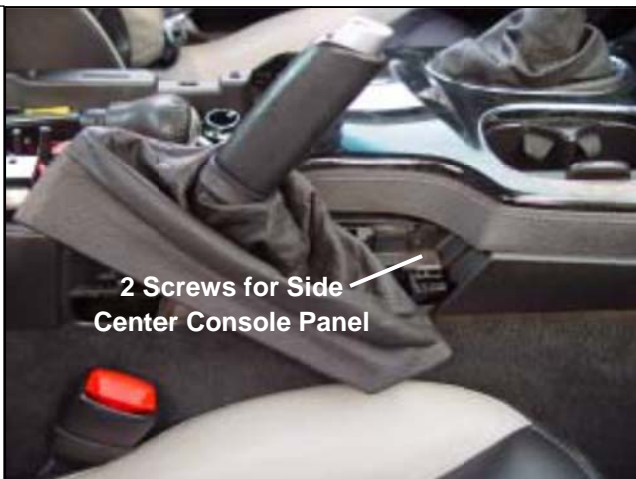
Note: Some model years may require the use of a 7mm socket instead of T-15 torx to remove screws.

TOOLS: Ratchet, Extension, T-15 Torx or 7mm Socket



3. Pull up on sleeve around emergency brake uncovering bolts attaching center console.

2 Screws for Side
Center Console Panel



4. Remove the (2) bolts holding down front center console, located right next to emergency brake.

Note: Some model years may require the use of a T-15 torx instead of 7mm socket to remove screws.

TOOLS: Ratchet, Extension, T-15 Torx or 7mm Socket



5. Remove passenger side panel by pulling it down.



6. Lift leather boot out of center console trim plate.



7. Hold top of knob and turn chrome collar counter-clockwise to loosen collar and access bolt securing knob.

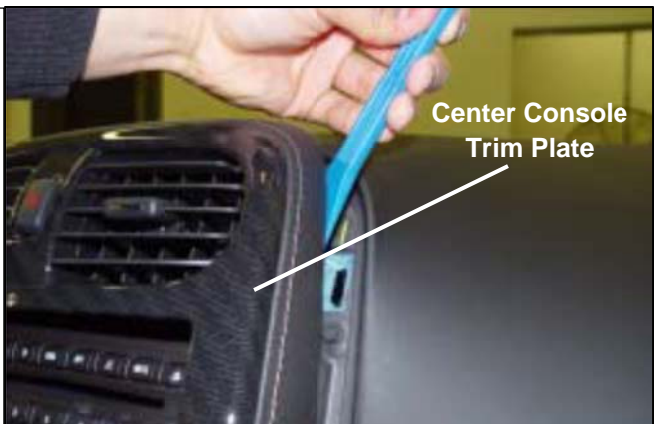
Note: Some model years may require the use of a small Phillip Screwdriver or T-20 (torx socket to remove the knob from the shifter. DO NOT remove chrome collar from leather boot.

TOOLS: Ratchet, Extension, T-20 Torx or small Phillip Screwdriver.



8. Remove center console trim plate from center console. Be sure to unclip any connectors that would prevent the removal of the center console trim plate.

TOOLS: Trim Panel Removal Tool



9. Remove rubber cover around shifter.



10. Remove (4) nuts securing second rubber layer of shifter.

TOOLS: Ratchet, Extension & Socket (10mm)



11. With the E-brake in the ON position, place the shifter in neutral and remove the 4 bolts securing the shifter to the transmission shifter base.

TOOL: Ratchet, Extension, & Socket (3/8")



12. Gently remove the pivot cup from the bottom of the stick. For extra protection, use a towel between the channel locks.

TOOL: Channel Locks Rubber Cover



ASSEMBLY

13. Grease the B&M Shifter pivot ball and snap the original pivot cup into the shifter.



14. Remove the old rubber gasket completely and install the provided gasket.

TOOL: Flathead Screwdriver or Gasket Scraper



15. Install the B&M shifter. Secure the shifter to the transmission shifter base with the provided (4) 1/4" washers and (4) 1/4"-20 screws.

*Add a drop of Loctite 242 to threads for added security. Test shifter through all gears.

TOOLS: Ratchet, Extension, & Socket (7/16")



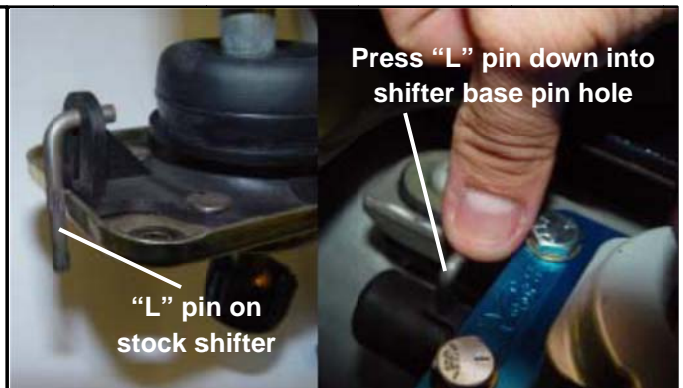
OPTIONAL INSTALLATION

NOTE: The following steps are to install the optional spacer and washer that are provided in the kit. A much more solid shifting feel is obtained if installing the provided spacer and washer because it replaces the much softer stock bushings. These steps are not necessary on Z06 model vehicles as it is already solid mounted.

IMPORTANT: The installation of the spacer and washer will transmit more noise and vibration than the softer rubber bushings. If a quieter and less vibration transmitting shift quality is preferred over a more solid and direct shift feel, then DO NOT proceed with these optional (A-F) installation steps.



A. See top-right picture for indication of working area. Remove "L" pin from the stock shifter. With the shifter still in neutral and E-brake in the ON position, insert the "L" pin into the pin hole of the shifter base. The "L" pin is used to keep everything aligned. If done correctly, shifter should not be able to shift out of neutral position.



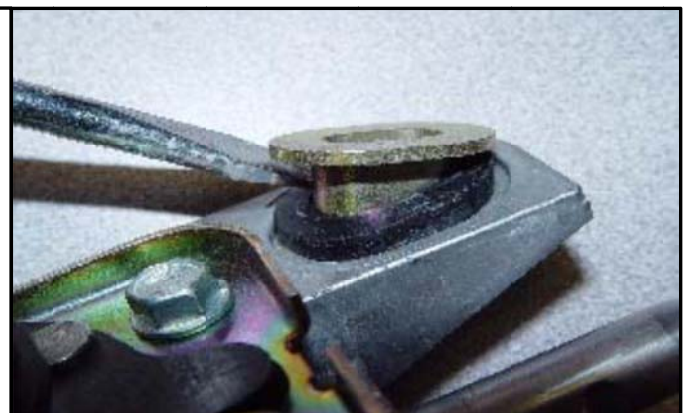
B. Remove the bolts (2) securing the shifter base to the vehicle.

TOOLS: Ratchet, Extension, T-40 Torx Socket



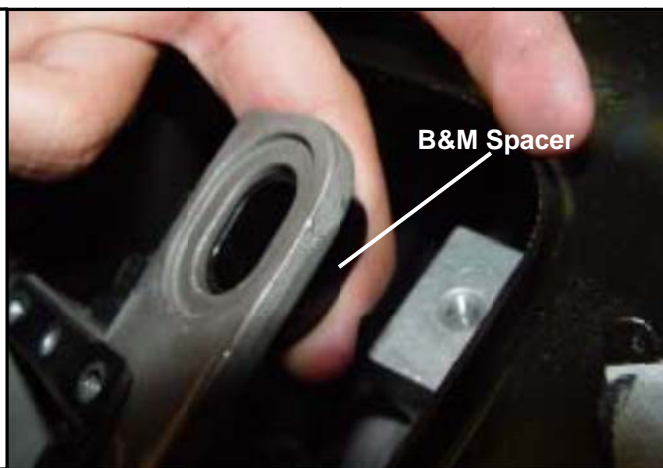
C. Remove the stock rubber bushings and spacer.

TOOL: Small Flatblade Screwdriver



D. Install the provided spacers underneath the base as shown.

CAUTION! Be careful not to allow the spacers to fall under the transmission shifter base because of the difficulty of retrieving the spacer. Use necessary precautions.



E. Place (2) provided washers on top of each spacer and thread the bolts securing the shifter base to the vehicle.

TOOLS: Ratchet, Extension, T-40 Torx Socket



F. Remove the "L" pin from the pin hole and test the shifter through each gear.



16. Reinstall the second rubber layer, securing the rubber using (4) nuts. Reinstall the first rubber layer.

TOOLS: Ratchet, Extension, Socket (10mm)



17. Reinstall all connector wires to the center console. Install the knob into the leather boot before installing back into the shifter (clip the knob back into the chrome collar). Reinstall the center console trim plate. Install the knob into the shifter.



18. Reinstall the leather boot into the center console trim plate. Unclip the knob from the chrome collar and screw the provided bolt into the shifter, make sure the bolt presses firmly onto the knob. Clip the chrome collar back into the knob.

C6: USE M6 BOLT & LOWER HOLE ON STICK.

TOOL: Allen Wrench (4mm)



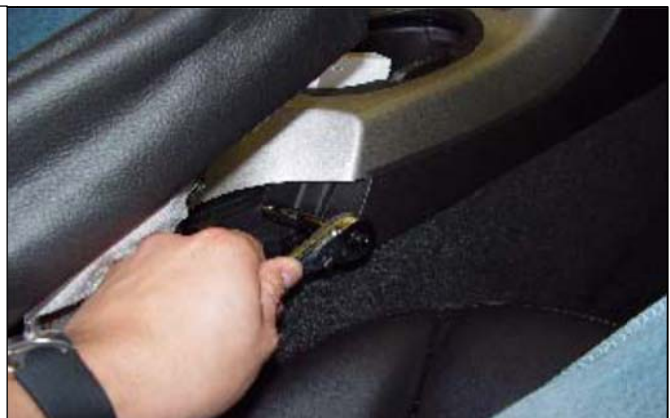
19. Reinstall the passenger side panel by lifting it up until it snaps into place.



20. Reinstall the (2) bolts holding down the front center console, located right next to the emergency brake.

Note: Some model years may require the use of a T-15 torx instead of 7mm socket to remove screws.

TOOLS: Ratchet, Extension, T-15 Torx or 7mm Socket



21. Reinstall the sleeve around the emergency brake.



22. Reinstall the (2) screws on the center console trim plate and covers.

Note: Some model years may require the use of a 7mm socket instead of T-15 Torx to remove screws.

TOOLS: Ratchet, Extension, T-15 Torx or 7mm Socket



23. Reinstall the (4) bolts securing the arm rest and remove arm rest.

TOOLS: Ratchet, Extension, T-15 Torx Socket



24. Ensure that all gears can be smoothly and fully engaged without binding or rough movement. Correct any problems prior to operating the vehicle.



IMPORTANT: RETAIN THESE INSTRUCTIONS FOR FUTURE REFERENCE

Technical Service

A highly trained technical service department is maintained by Hurst Performance to answer your technical questions, provide additional product information and offer various recommendations.

Technical service calls, correspondence, and warranty questions should be directed to:



B&M Racing & Performance Products

(707) 544-4761

www.bmracing.com